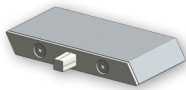
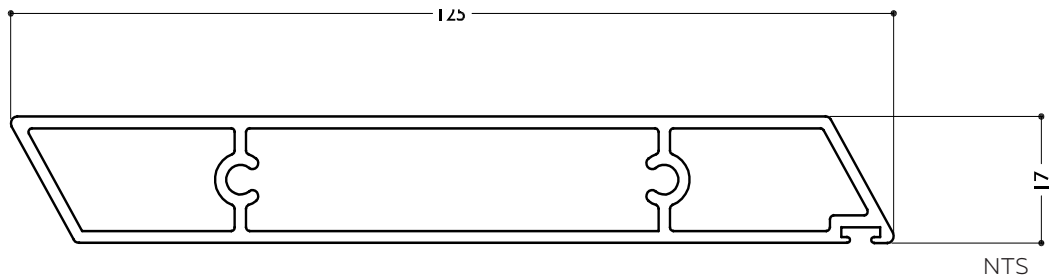


SUN LOUVRES END FIXED
125MM WEATHERBOARD PANEL

(GROUP 4 LOUVRES COLLECTION)



BLADE SPECIFICATIONS 125MM WEATHERBOARD PANEL



BLADE SPECIFICATIONS			
Blade cover - opening system	115 mm	Weight per linear metre - opening system	1.33 kg/lm
Weight per square metre - opening system	12 kg/sqm	Actual blade width	125 mm
Blade centres - opening system	115 mm		

SPANS AT A GLANCE NB:

Refer Engineering Section. Climate, terrain, shielding, location, type of structure contribute to determine spans.

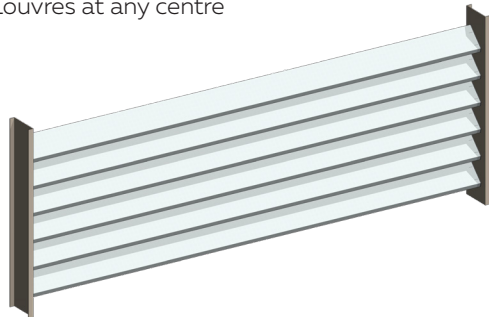
WIND ZONE	INSIDE	LOW	MEDIUM	HIGH	VERY HIGH	EXTRA HIGH
Factored wind speed at building	Self wt	32 m/s 115 km/hr	37m/s 133 km/hr	44 m/s 158 km/hr	50 m/s 179 km/hr	55 m/s 198 km/hr
Ultimate limit state loads (kPa)		+0.92 & -1.15	+1.23 & -1.53	+1.74 & -2.17	+2.24 & -2.80	+2.71 & -3.39
Adjustable & Fixed Horizontal & Vertical	2600	2500	2300	2050	1900	1750

INSTALLATION OPTIONS



END FIXED

Louvres at any pitch
Louvres at any centre

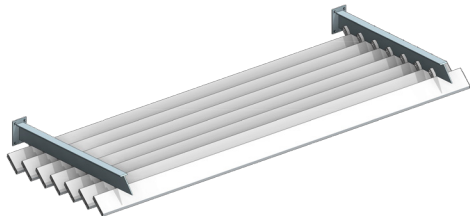


END FIXED VERTICAL PANEL - HORIZONTAL LOUVRES



BRACKET FIXED

Louvres at any pitch
Louvres at any centre



BRACKET FIXED OVERHEAD PANEL - HORIZONTAL LOUVRES