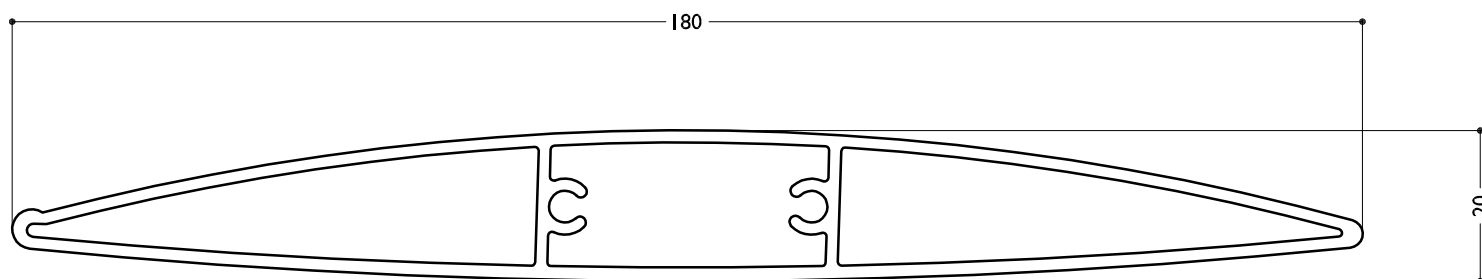


SUN LOUVRES SPIRAL PIVOT



BLADE SPECIFICATIONS 180MM AIRFOIL LOUVRE



BLADE SPECIFICATIONS			
Blade cover - opening system	169 mm	Weight per linear metre - opening system	1.85 kg/lm
Weight per square metre - opening system	11 kg/sqm	Actual blade width	180 mm
Blade centres - opening system	169 mm		

SPANS AT A GLANCE

Refer Engineering Section. Climate, terrain, shielding, location, type of structure contribute to determine spans.

WIND ZONE	INSIDE	LOW	MEDIUM	HIGH	VERY HIGH	EXTRA HIGH
Factored wind speed at building	Self wt	32 m/s 115 km/hr	37m/s 133 km/hr	44 m/s 158 km/hr	50 m/s 179 km/hr	55 m/s 198 km/hr
Adjustable & Fixed, Horizontal & Vertical	3100	2950	2700	2400	2200	2050

INSTALLATION OPTIONS



SPIRAL PIVOT SYSTEM: CALCULATE OPTIMUM FRAME OPENING SIZES

Width: Check engineering limits

Height: Calculation example showing 17 blades

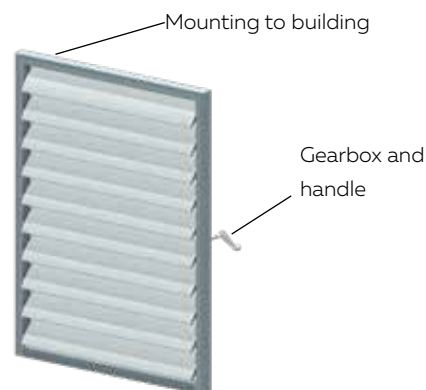
STEP 1

16 blades x 169	2704
1 blade at 180	180
17 blades	=2884

STEP 2

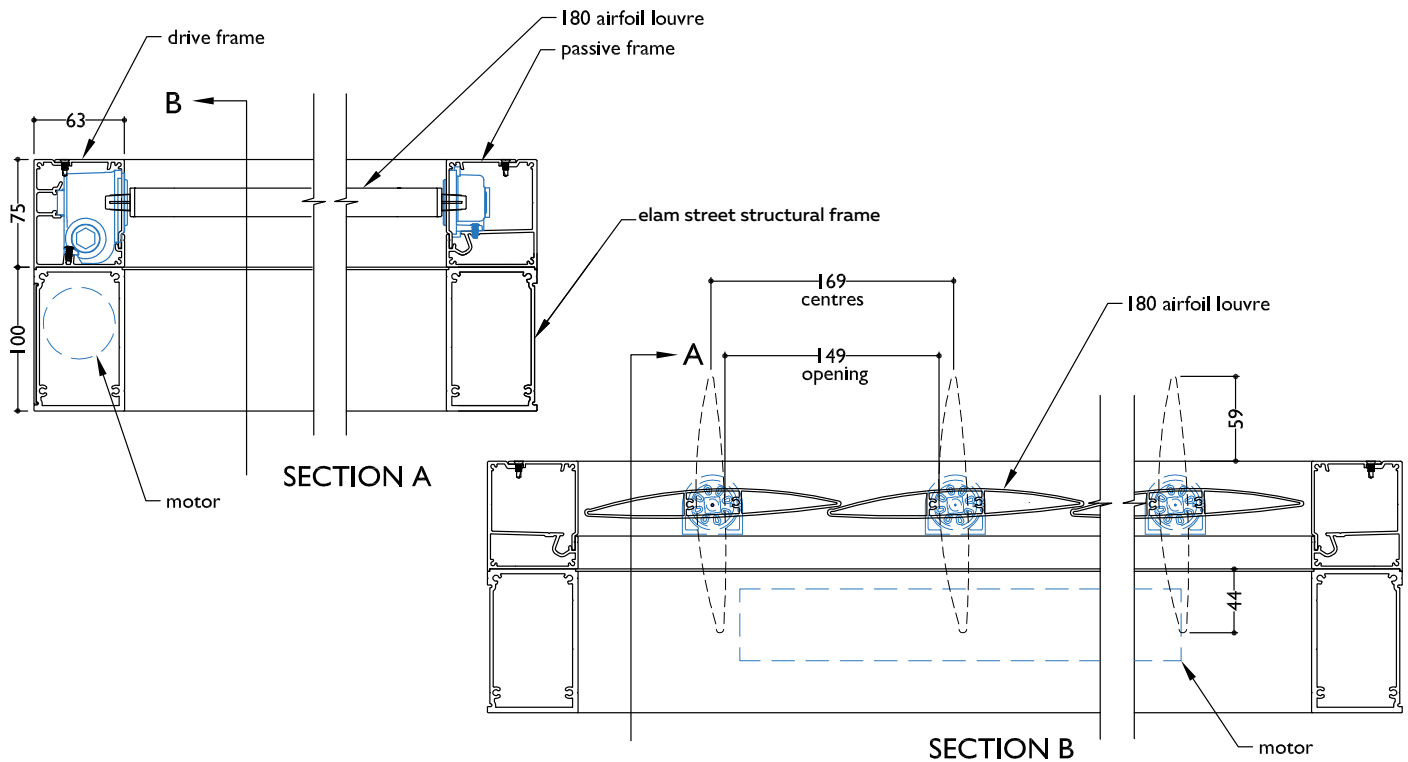
Blade cover	2884
+ top and bottom closing angles allow for	
5mm + 5mm	10
Total exact opening height =	2894*

*This is inside measure - not outer frame size



ELAM STREET STRUCTURAL FRAME
VERTICAL PANEL - HAND OPERABLE HORIZONTAL
BLADES

SECTION - MOTORISED 180MM AIRFOIL LOUVRE SPIRAL PIVOT ON ELAM STREET STRUCTURAL FRAME



**SECTION - MANUALLY OPERABLE 180MM AIRFOIL LOUVRE SPIRAL PIVOT INSERT PANEL
FOUR SIDED FRAME**

