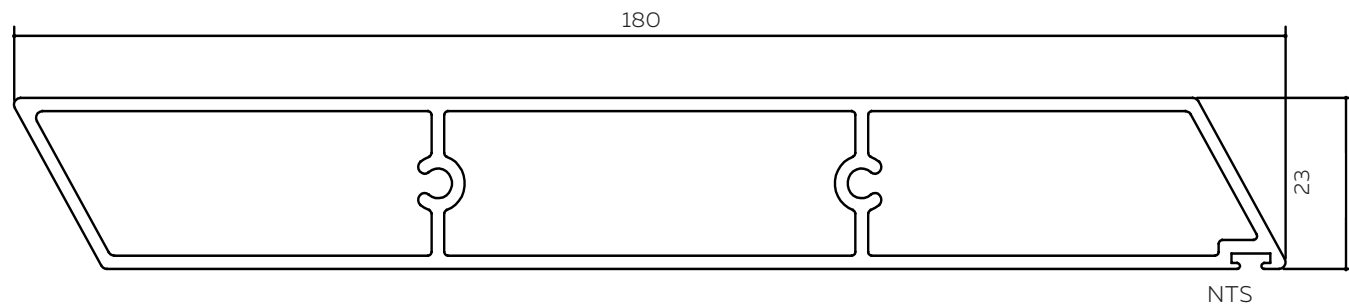


BLADE SPECIFICATIONS 180MM WEATHERBOARD PANEL



BLADE SPECIFICATIONS - END OR BRACKET FIXED ONLY			
Blade cover - opening system	169 mm	Weight per linear metre - opening system	2.12 kg/lm
Weight per square metre - opening system	13 kg/sqm	Actual blade width	180 mm
Blade centres - opening system	169 mm		

SPANS AT A GLANCE NB:

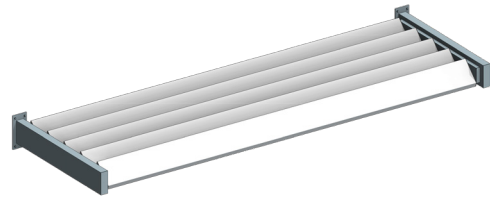
Refer Engineering Section. Climate, terrain, shielding, location, type of structure contribute to determine spans.

WIND ZONE	INSIDE	LOW	MEDIUM	HIGH	VERY HIGH	EXTRA HIGH
Factored wind speed at building		32 m/s 115 km/hr	37m/s 133 km/hr	44 m/s 158 km/hr	50 m/s 179 km/hr	55 m/s 198 km/hr
Ultimate limit state loads (kPa)		+0.92 & -1.15	+1.23 & -1.53	+1.74 & -2.17	+2.24 & -2.80	+2.71 & -3.39
Adjustable & Fixed Horizontal & Vertical	3200	3050	2800	2500	2300	2100

INSTALLATION OPTIONS



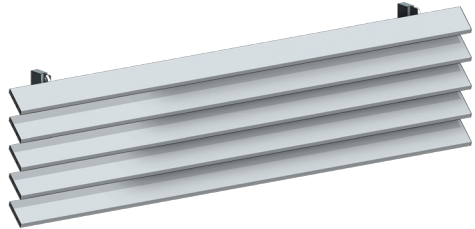
**END FIXED**  
Louvres at any pitch  
Louvres at any centre



END FIXED OVERHEAD PANEL - HORIZONTAL LOUVRES



**BRACKET FIXED**  
Louvres at any pitch



BRACKET FIXED VERTICAL PANEL - HORIZONTAL LOUVRES