



SUBURBAN ROOFS BRINGING CONTROLLABLE SHADE & STYLE. BY LOUVRETEC ADELAIDE

200 SUBURBAN ROOF

Quality & economy in mind

Designed with quality and economy in mind the engineered 200 Suburban Roof blades provide wide spanning capabilities.

Using the highest grade aluminium every aspect is fully engineered and backed by Louvretec's product and workmanship warranty and powered by Somfy.

Now comes with a new extruded motor cover and a 185mm extra wide gutter to all four sides as standard.



200 SUBURBAN ROOF



200 SUBURBAN ROOF
BLADES CLOSED



200 SUBURBAN ROOF
BLADES OPENING

MOTORISED OR HAND OPERATED

Controller and
Sensor Options
Refer Pages
2.17 - 2.18
for range of options



SURFACE FINISHING OPTIONS

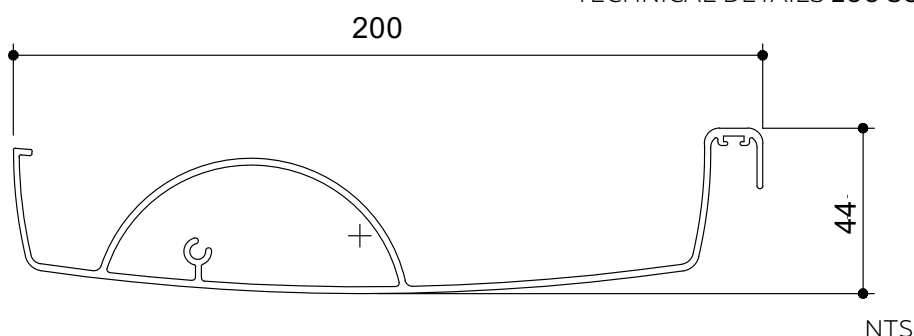
A wide range of options are available.



OPENING ROOFS SPECIFICATIONS



TECHNICAL DETAILS 200 SUBURBAN ROOF



BLADE SPECIFICATIONS			
Blade cover - opening system	188 mm	Weight per linear metre - opening system	1.928 kg/lm
Weight per square metre - opening system	10.25 kg/sqm	Actual blade width	200 mm
Blade centres - opening system	188 mm		

SPANS AT A GLANCE

Refer Engineering Section. Climate, terrain, shielding, location, type of structure contribute to determine spans.

WIND ZONE	INSIDE	LOW	MEDIUM	HIGH	VERY HIGH	EXTRA HIGH
Factored wind speed at building	Self wt	32 m/s	37m/s	44 m/s	50 m/s	55 m/s
		115 km/hr	133 km/hr	158 km/hr	179 km/hr	198 km/hr
200 Suburban Roof 3m Height	4500	4500	4500	4000	3600	3300
200 Suburban Roof 6m Height		4500	4500	3800	3250	3000

INSTALLATION OPTIONS



CALCULATE OPTIMUM FRAME OPENING SIZES FOR SPIRAL PIVOT

Span: Check engineering span limits

Pivot: Calculation example showing 17 blades

STEP 1

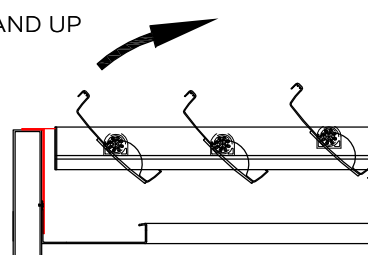
16 blades x 188 Crs	3008
1 blade at 200 (blade size)	+ 200
17 blades	= 3208

STEP 2

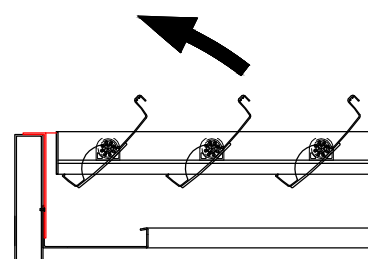
Blade cover	3208
+2/22mm clearance @ ends	= 44
Total exact pivot length	= 3252
Extra width 185mm gutter provides cover if clearance increases over 22mm at ends.	
Blade direction either Right Hand up or Left Hand up.	

CHOOSE DIRECTION OF BLADE PIVOT

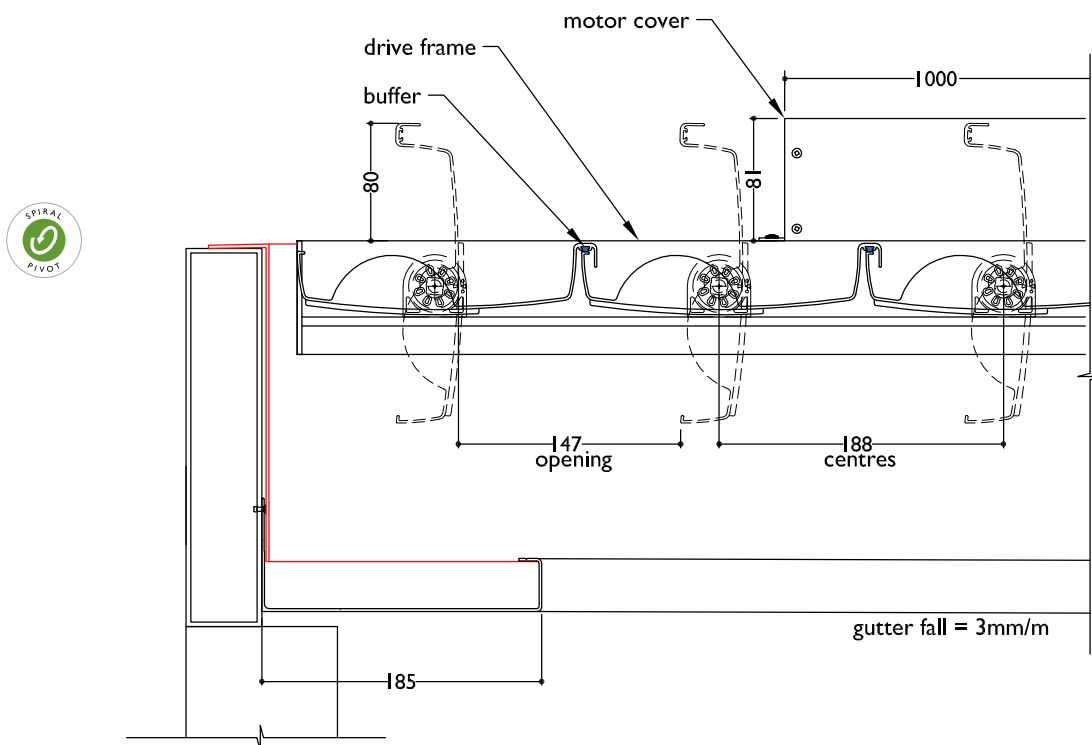
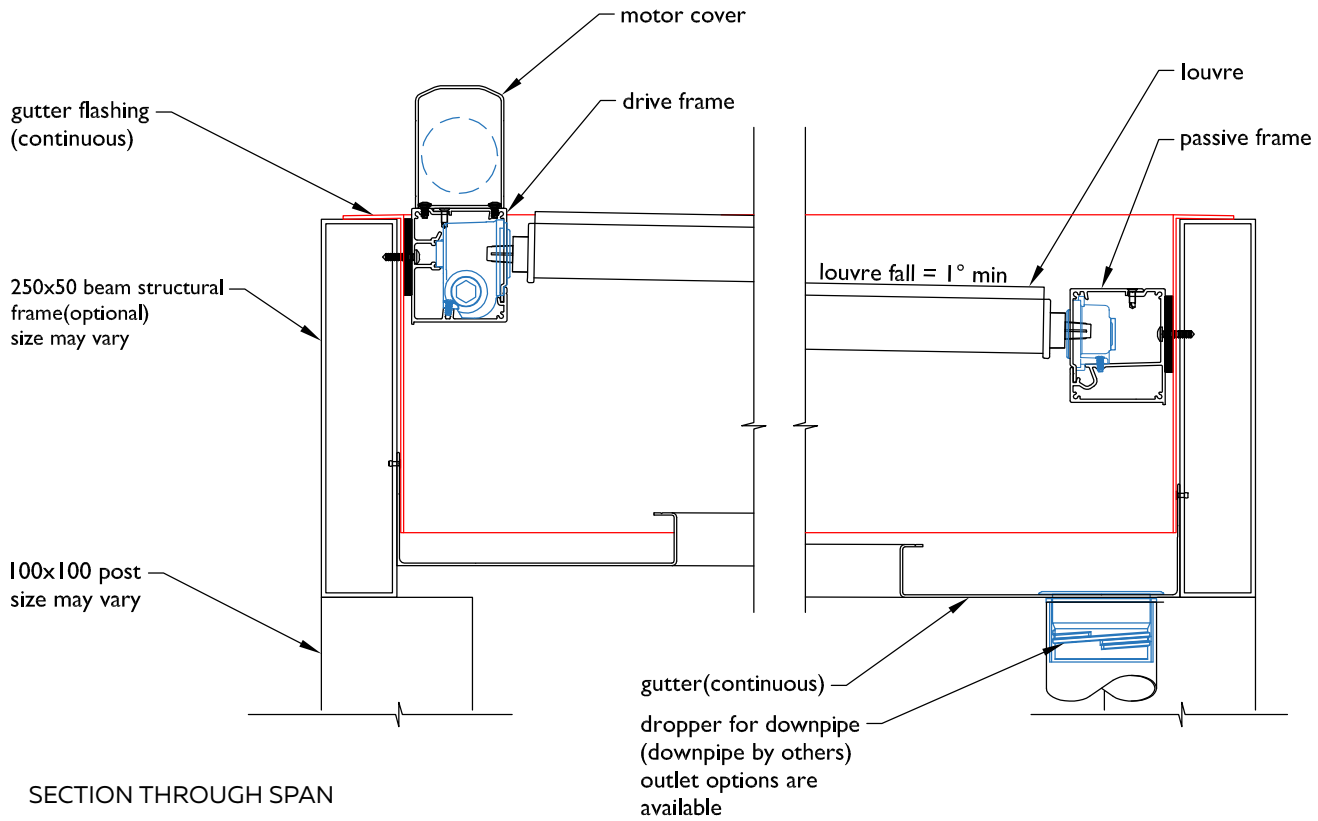
LEFT HAND UP



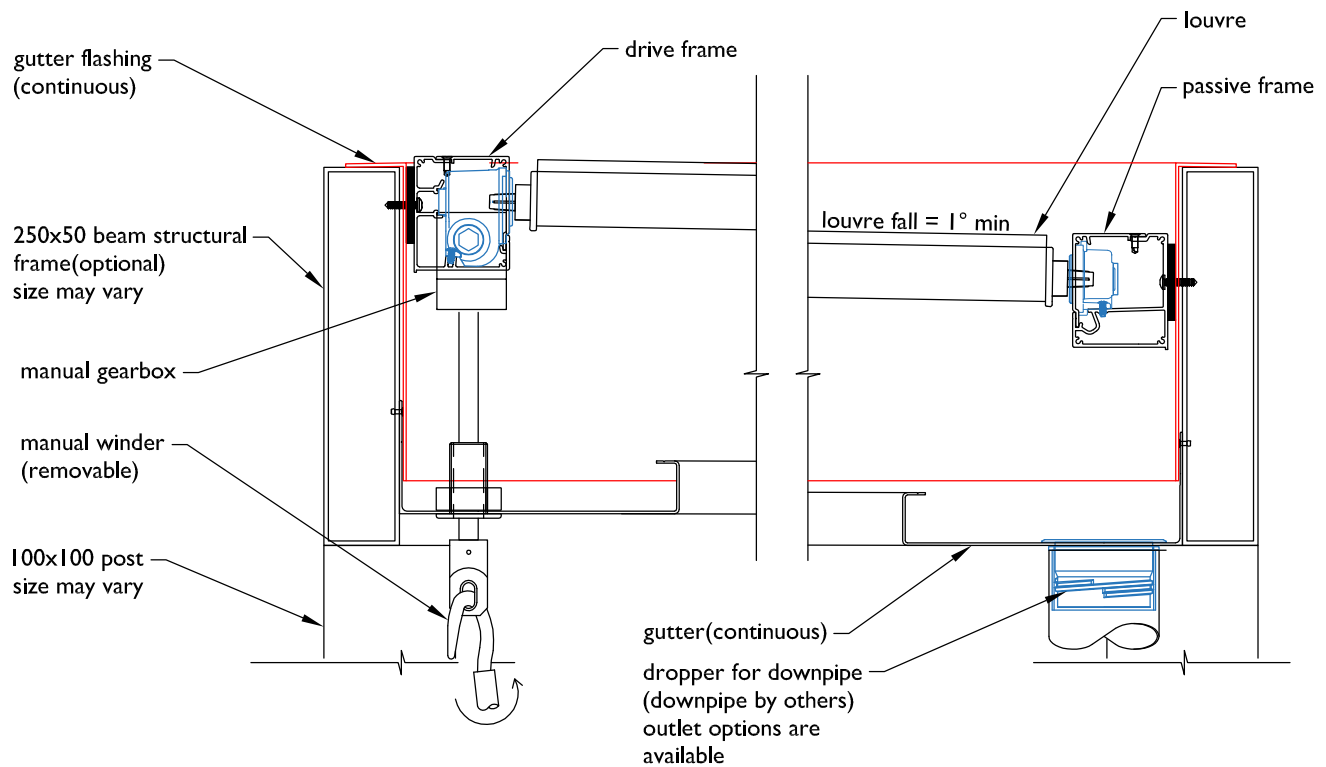
RIGHT HAND UP



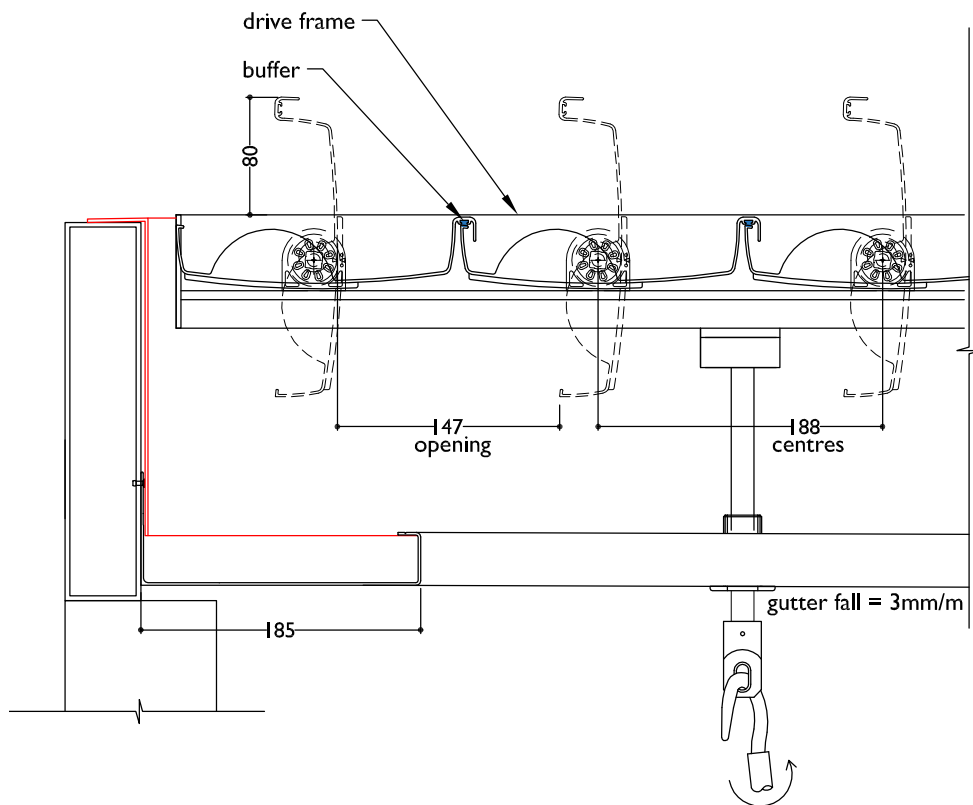
TYPICAL DETAIL : MOTORISED 200 SUBURBAN ROOF WITHIN LOUVRETEC STRUCTURAL FRAME



**TYPICAL DETAIL : HAND OPERABLE 200 SUBURBAN ROOF
WITHIN LOUVRETEC STRUCTURAL FRAME**



SECTION THROUGH SPAN



SECTION THROUGH LOUVRES