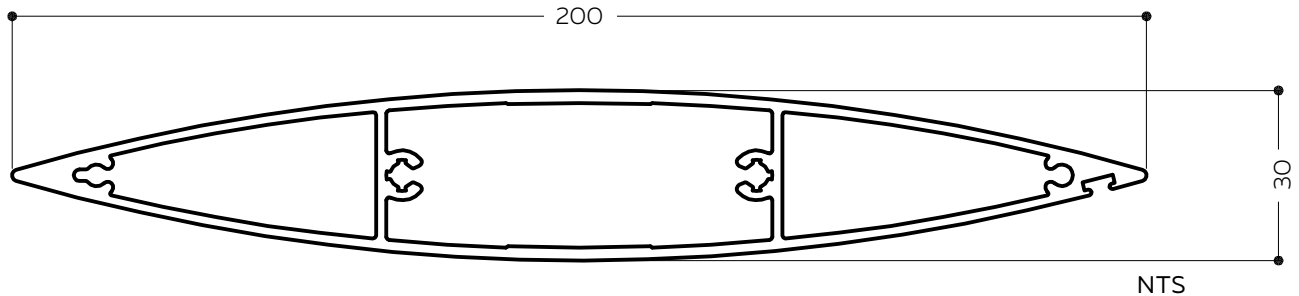




BLADE SPECIFICATIONS 200MM MAXI LOUVRE



BLADE SPECIFICATIONS			
Blade cover - opening system	188 mm	Weight per linear metre - opening system	2.75 kg/lm
Weight per square metre - opening system	14.63 kg/sqm	Actual blade width	200 mm
Blade centres - opening system	188 mm		

SPANS AT A GLANCE

Refer Engineering Section. Climate, terrain, shielding, location, type of structure contribute to determine spans.

WIND ZONE	INSIDE	LOW	MEDIUM	HIGH	VERY HIGH	EXTRA HIGH
Factored wind speed at building	Self wt	32 m/s 115 km/hr	37m/s 133 km/hr	44 m/s 158 km/hr	50 m/s 179 km/hr	55 m/s 198 km/hr
Adjustable & Fixed, Horizontal & Vertical	3700	3700	3550	2950	2600	2350

INSTALLATION OPTIONS



SPIRAL PIVOT SYSTEM: CALCULATE OPTIMUM FRAME OPENING SIZES

Width: Check engineering limits

Height: Calculation example showing 17 blades

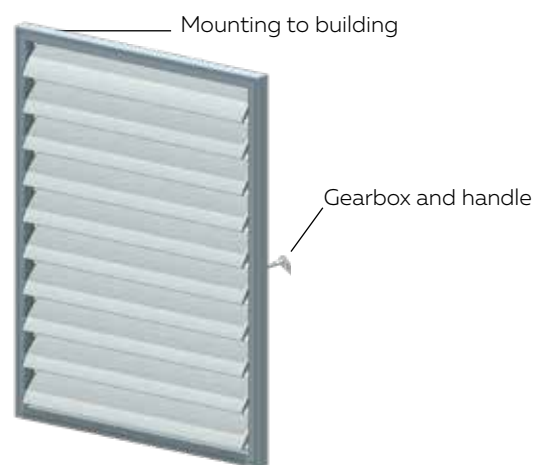
STEP 1

16 blades x 188	3008
1 blade at 200	200
17 blades	=3208

STEP 2

Blade cover	
+ top and bottom closing	
angles allow for	
5mm + 5mm	10
Total exact opening height	=3218*

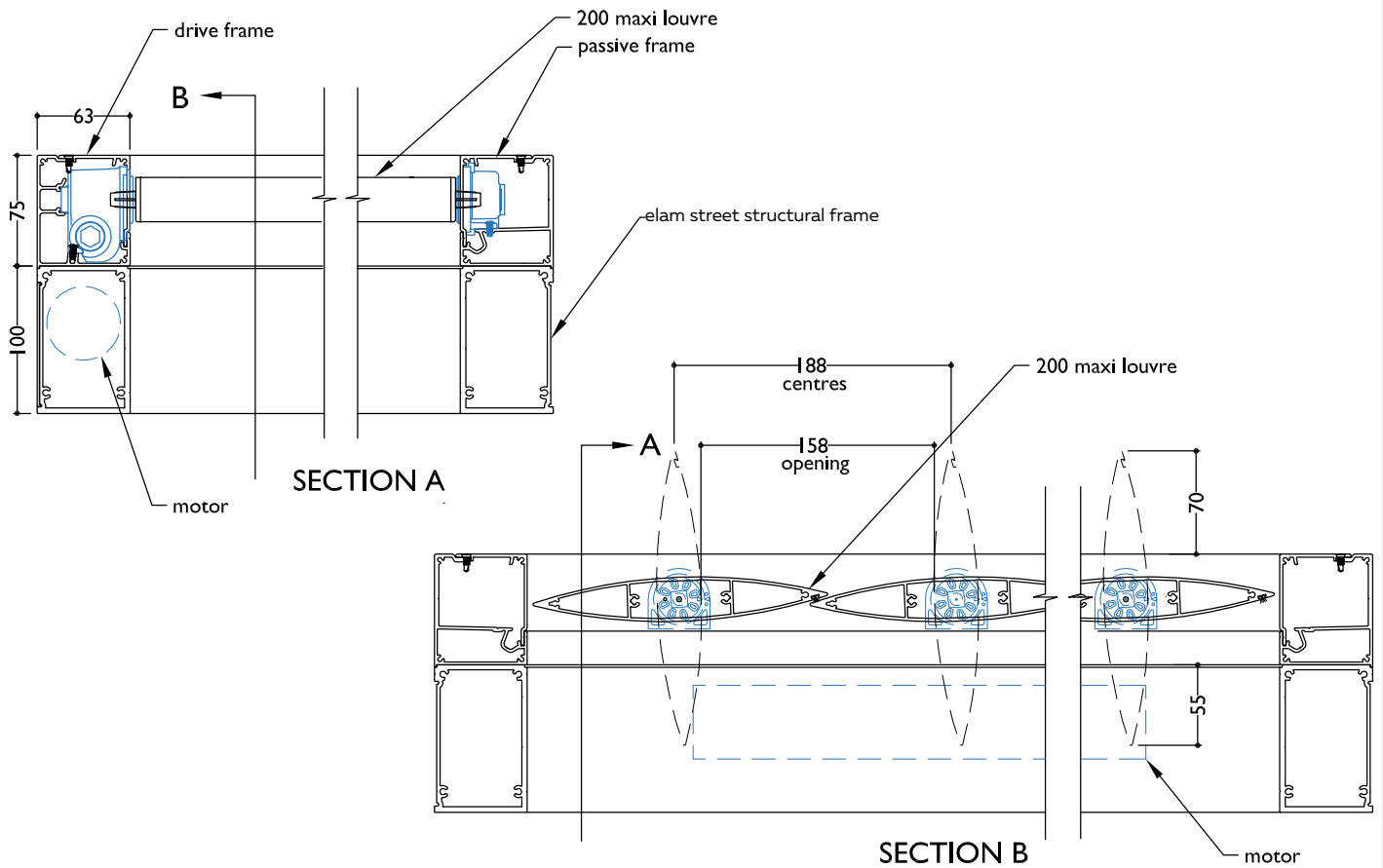
*This is inside measure - not outer frame size



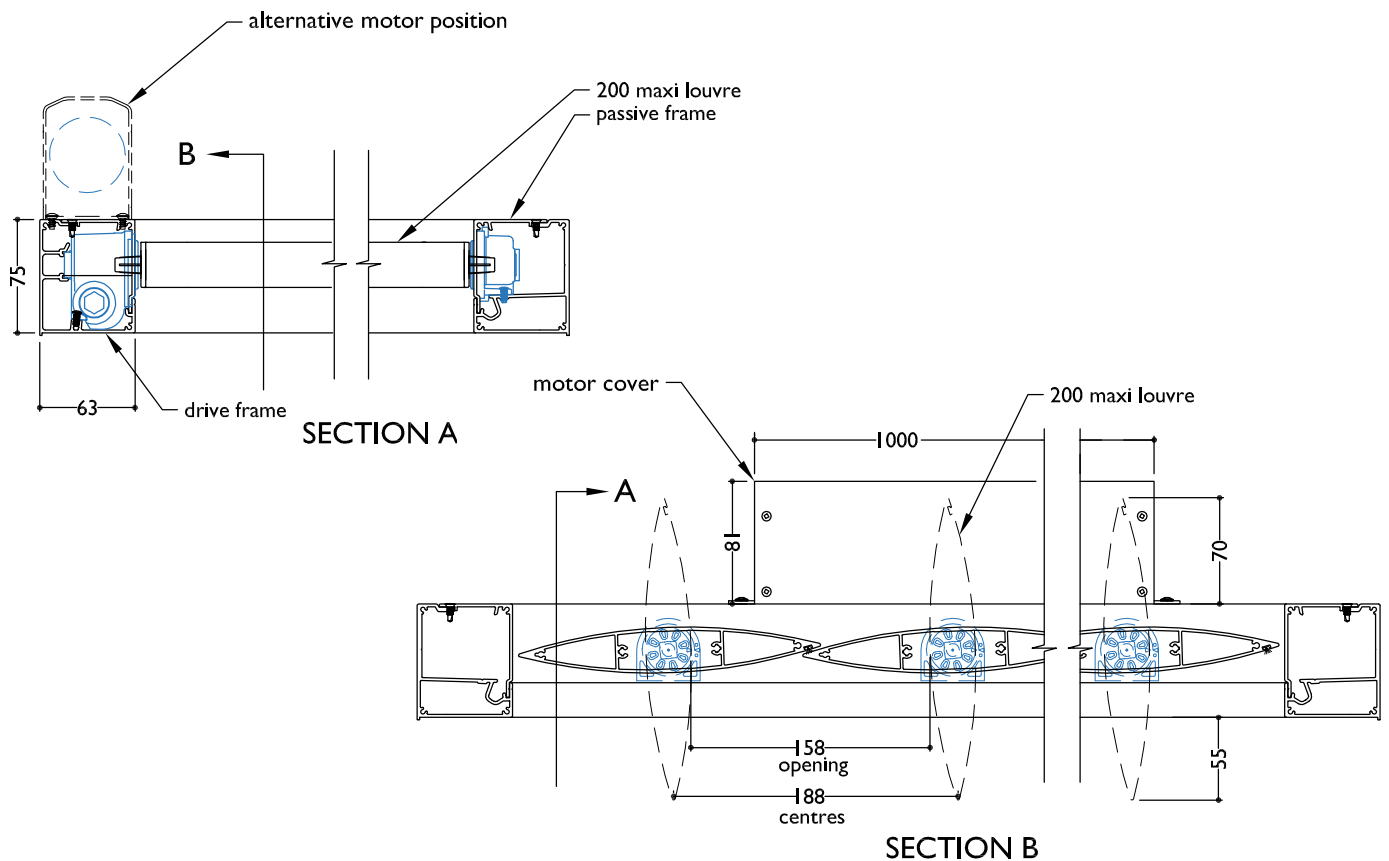
ELAM STREET STRUCTURAL FRAME
VERTICAL PANEL - HAND OPERABLE HORIZONTAL BLADES

**TYPICAL DETAIL: SPIRAL PIVOT SYSTEM
200MM MAXI LOUVRE**

SECTION - MOTORISED 200MM MAXI LOUVRE SPIRAL PIVOT ON ELAM STREET STRUCTURAL FRAME

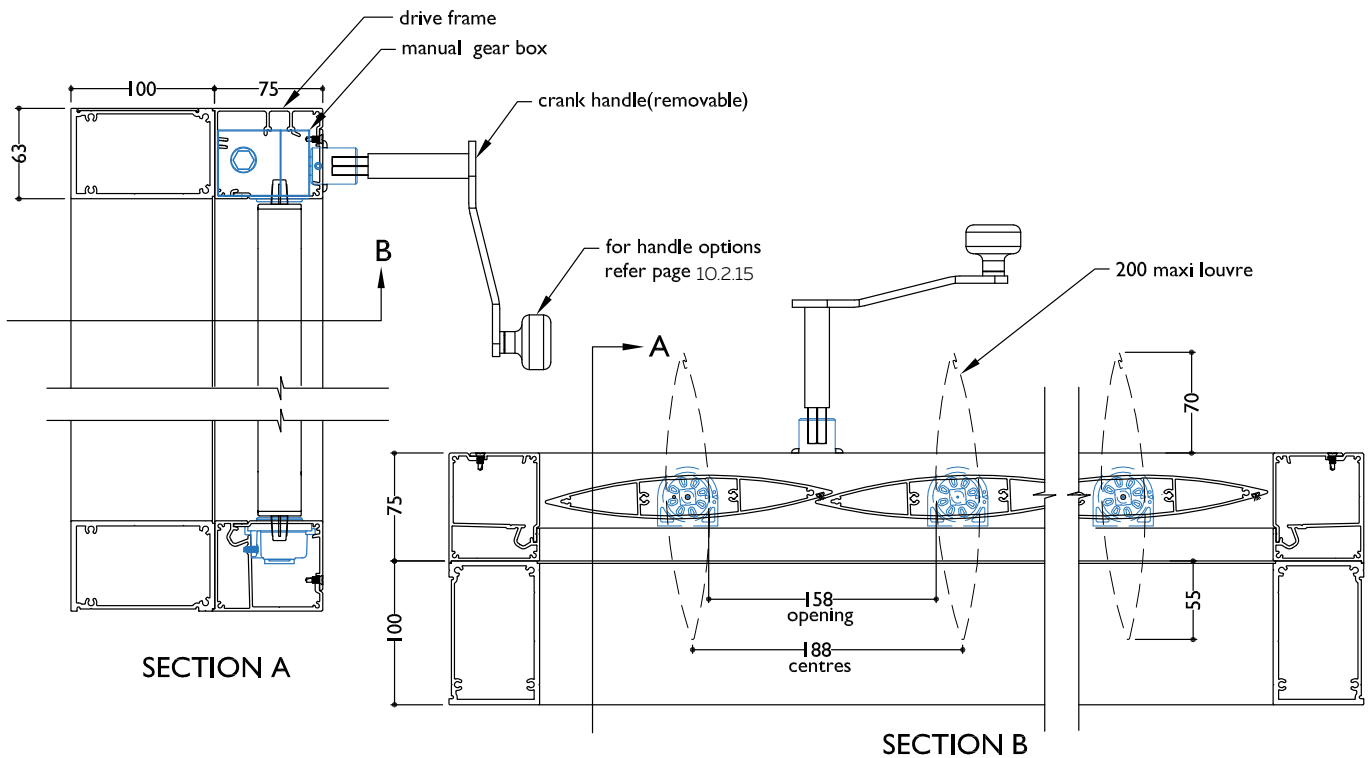


SECTION - MOTORISED 200MM MAXI LOUVRE SPIRAL PIVOT WITH TOP MOUNTED MOTOR INSERT PANEL FOUR SIDED FRAME

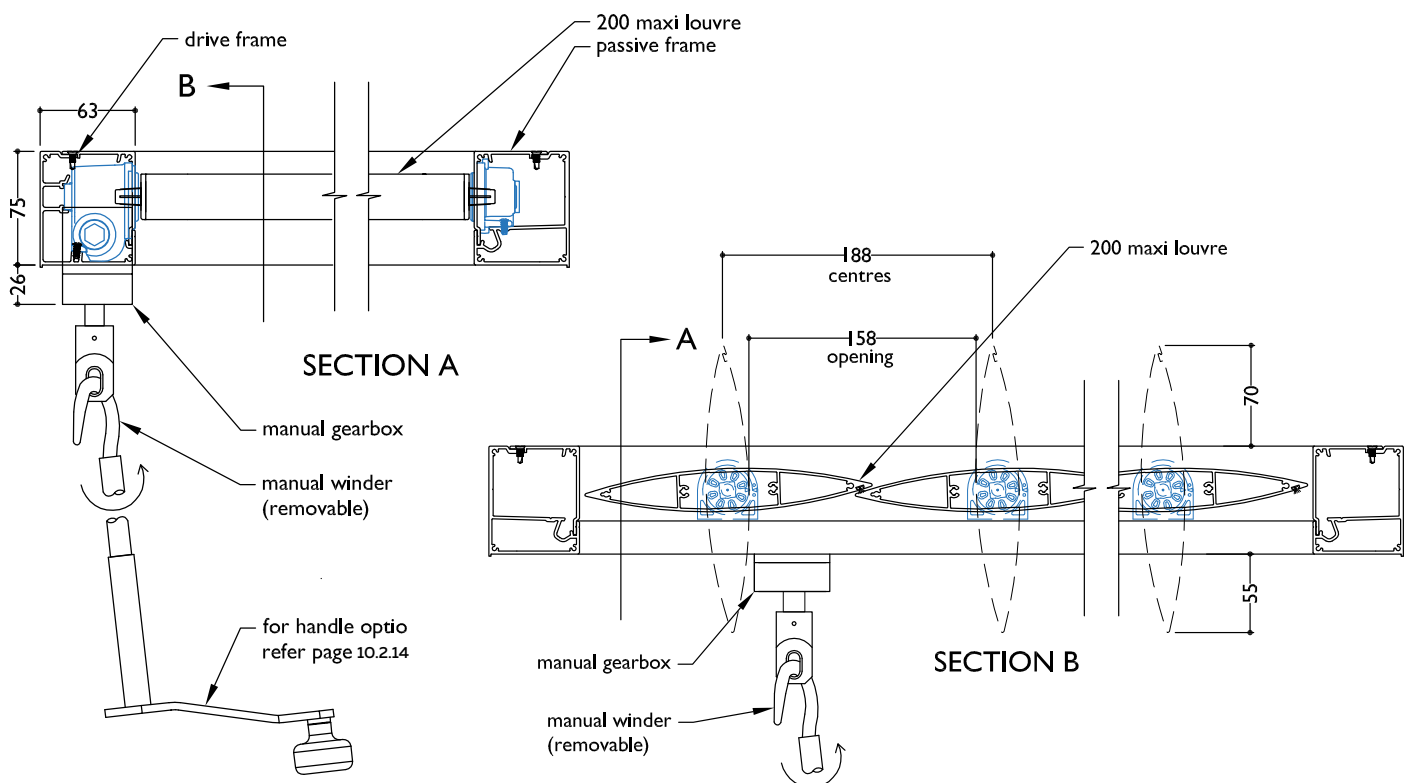


**TYPICAL DETAIL: HAND OPERABLE SPIRAL PIVOT SYSTEM
200MM MAXI LOUVRE**

**SECTION - MANUALLY OPERABLE 200MM MAXI LOUVRE USING SPIRAL PIVOT SYSTEM
ON ELAM STREET STRUCTURAL FRAME**



**SECTION - MANUALLY OPERABLE 200MM MAXI LOUVRE USING SPIRAL PIVOT SYSTEM
INSERT PANEL - FOUR SIDED FRAME**



SCALE: DATE MODIFIED: 01/10/2024 FILE: SUN LOUVRES Spiral Pivot 10.2.27

www.louvretec.co.nz www.louvretec.com.au

©Louvretec 2025 - All Rights Reserved. Technical specifications subject to change without notice.

LouvreTec®

| 10.2.27