



220/45 ALPINE RETRACT ROOF

A Multi-purpose Louvre blade compatible with Retract as well as a Standard Spiral Pivot Roof

For Larger Spans & Alpine Locations

This Roof is a larger spanning version of the 220/35 Slimline. The 220/45 Alpine Retract Roof leads the way with outstanding spanning capabilities – Ideal for high wind zones and alpine regions.

Key Features

- Sleek, functional design, clean and uncluttered when open or closed
- Design strength of an extruded double box-section
- Somfy powered
- “Cushion Closing” onto an external sun-resistant PVC bulb seal
- Increased closing cover angle for added weather protection
- Larger blade gutter incorporated for extra storm-water dispersal

Market Leading Design

Motorised by powerful twin Somfy Tubular motors, a multi-purpose Louvretec controller comes as standard. The system can also be configured for home automation technology.

All the operating mechanism. Electronics and motors are incorporated within the side frame extrusions, completely hidden from sight and protected from the weather.

Louvretec Retracts are factory assembled, tested and calibrated as part of the manufacturing process. They come to site pre-wired ready for the electrician to connect through a standard junction box.



WAIPU COVE, NORTHLAND NZ



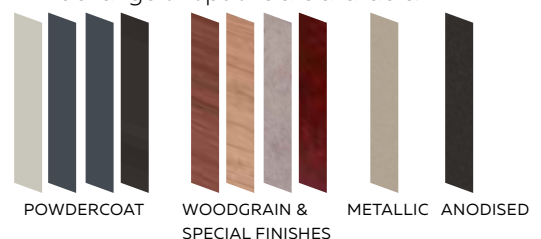
220/45 ALPINE RETRACT ROOF BLADE



LOUVRETEC MULTI-CHANNEL CONTROLLER
Custom programmed.

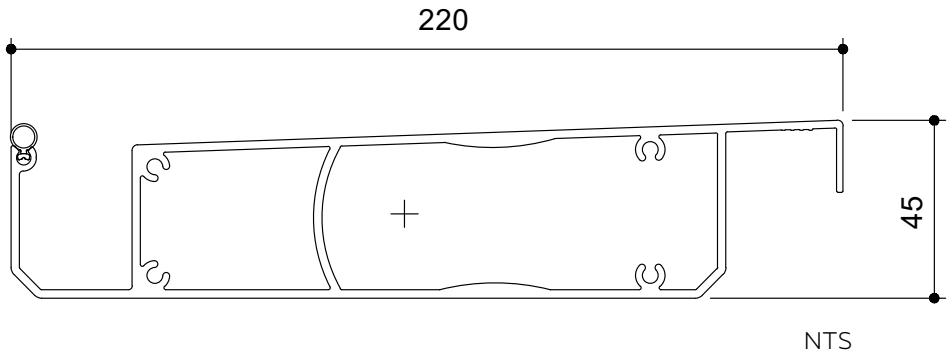
SURFACE FINISHING OPTIONS

A wide range of options are available.





BLADE SPECIFICATIONS 220/45 ALPINE RETRACT ROOF



BLADE SPECIFICATIONS			
Blade cover - opening system	205 mm	Weight per linear metre - opening system	3.74 kg/lm
Weight per square metre - opening system	18.2 kg/sqm	Actual blade width	220 mm
Blade centres - opening system	205 mm		

SPANS AT A GLANCE: Refer Engineering Section.

WIND ZONE	INSIDE	LOW	MEDIUM	HIGH	VERY HIGH	EXTRA HIGH
Factored wind speed at building	Self wt	32 m/s	37m/s	44 m/s	50 m/s	55 m/s
		115 km/hr	133 km/hr	158 km/hr	179 km/hr	198 km/hr
220/45 Alpine Retract Roof 3m Height	5000	5000	5000	5000	5000	5000
220/45 Alpine Retract Roof 6m Height		5000	5000	5000	5000	4700

TYPICAL CROSS SECTIONS

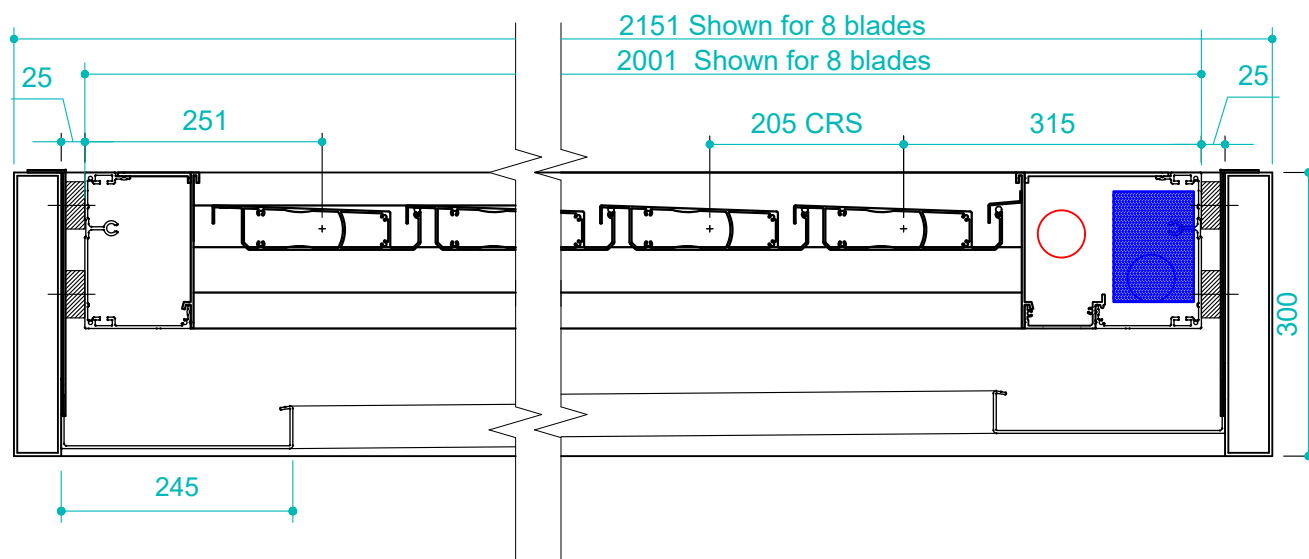


TO CALCULATE EXACT OPENING SIZES FOR RETRACT SYSTEM
REFER TO PAGES 3.24 - 3.35 (DEPENDING ON FRAME CHOICE) IN
THIS SECTION

*RETRACTED AREA APPROX. 25% OF OPENING

SNOW LOADINGS
REFER ENGINEERING SECTION, PAGES 13.31 & 13.32

**TYPICAL DETAIL : CROSS SECTIONS 220/45 ALPINE RETRACT ROOF
WITHIN 300x50 ALUMINIUM STRUCTURAL FRAME**

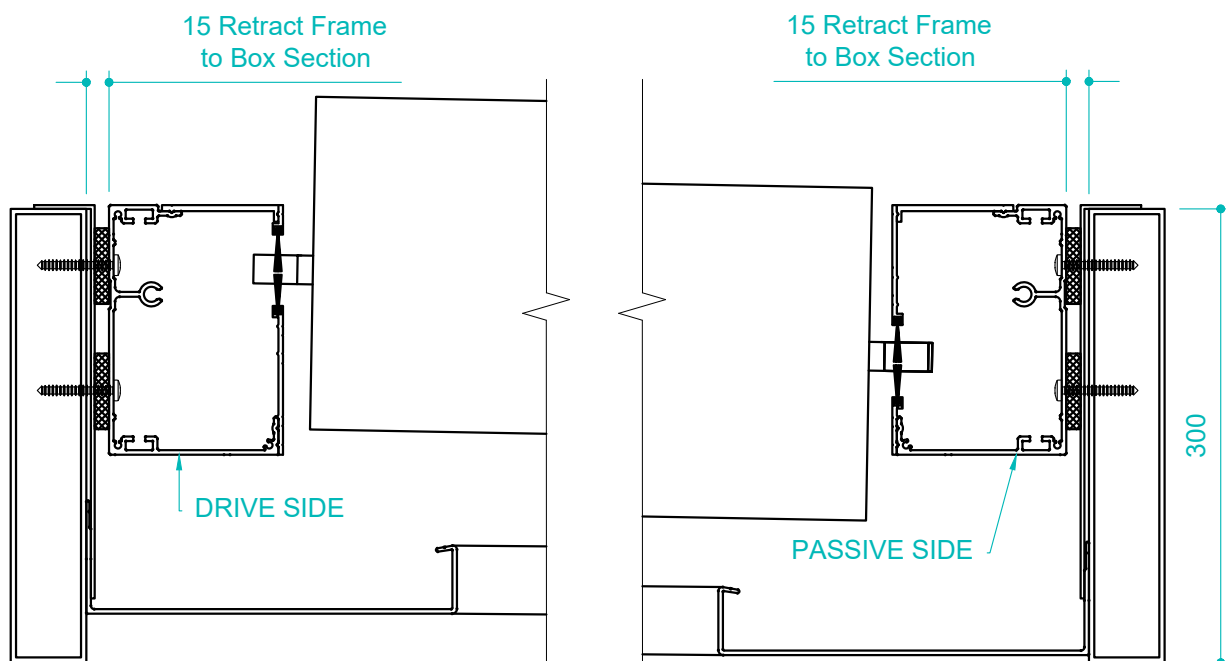


CROSS SECTION THROUGH BLADES

THIS DIMENSION IS CRITICAL AND IS DETERMINED BY THE NUMBER OF BLADES USED AND THE CONFIGURATION OF THE RETRACT ROOF.

FOR RETRACT BLADE CALCULATION SHEETS

REFER TO PAGES 3.24 - 3.35 (DEPENDING ON FRAME CHOICE) IN THIS SECTION



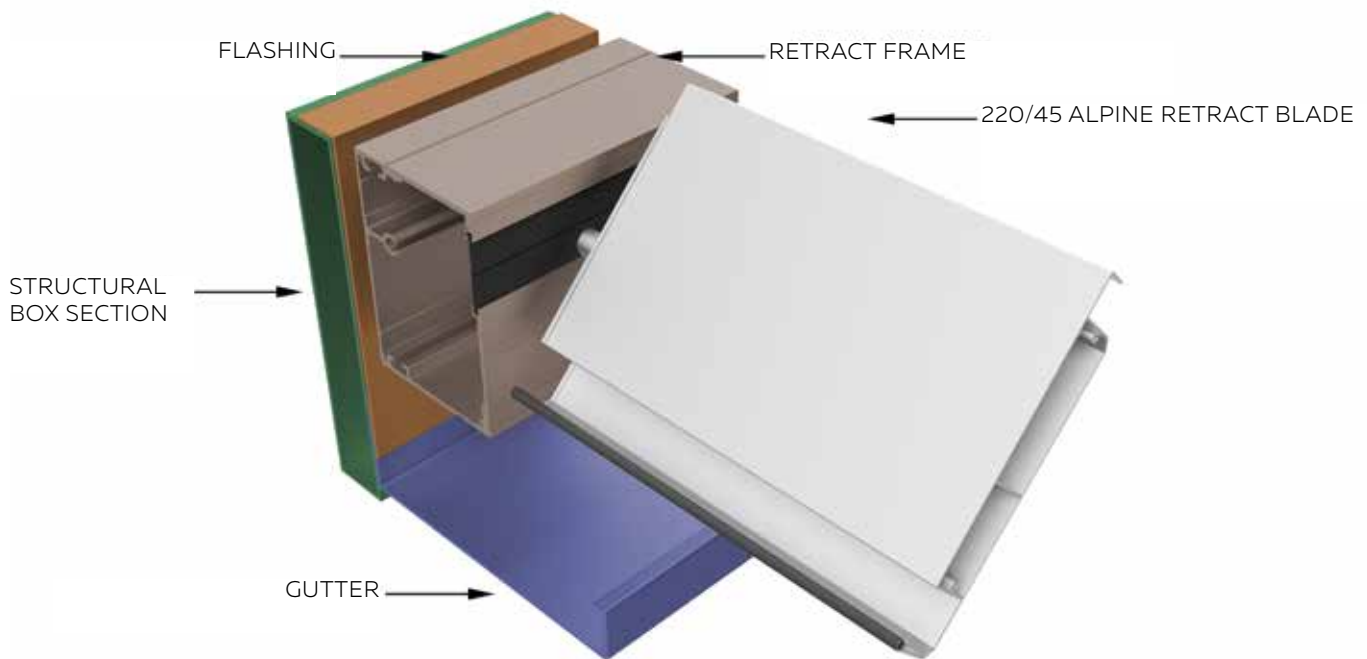
CROSS SECTION RUNNING WITH BLADES

THIS DIMENSION IS FLEXIBLE AND LIMITED ONLY BY SPANNING CAPABILITY OF RETRACT BLADE.

FOR RETRACT BLADE SPAN CHART

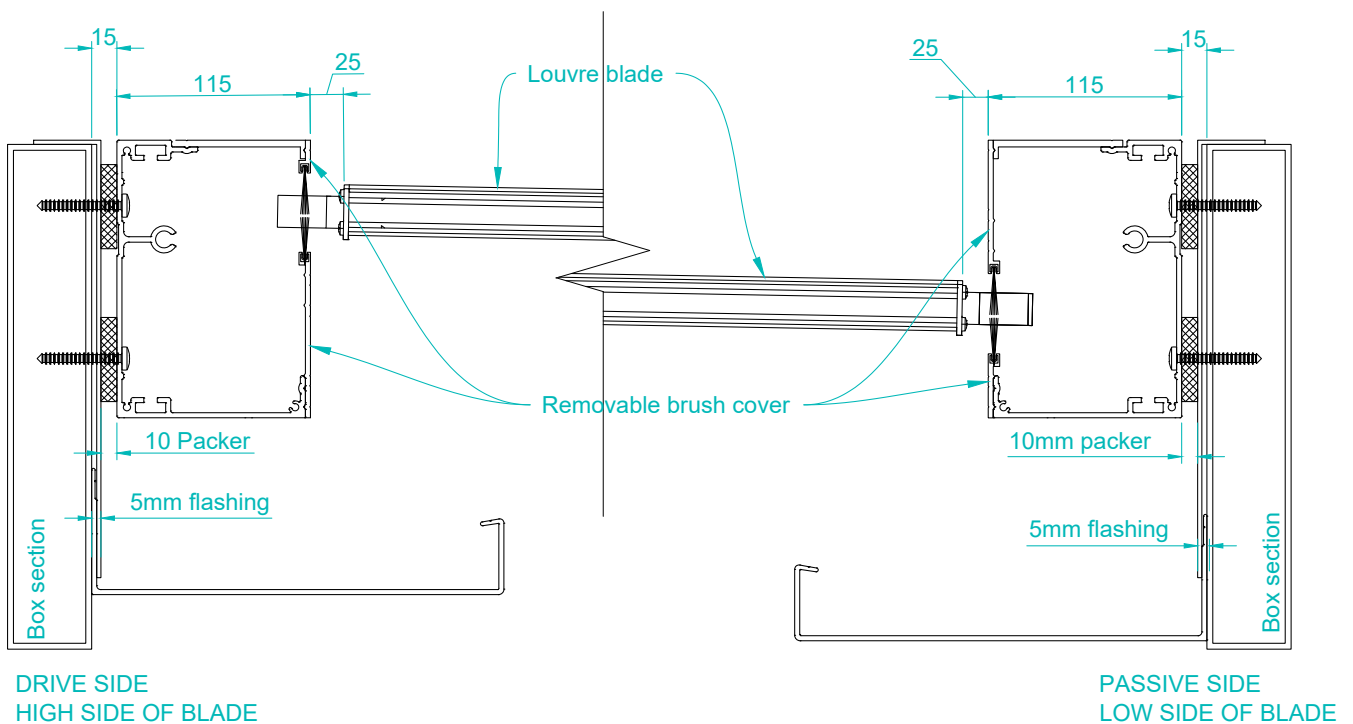
REFER TO PAGE 3.15 IN THIS RETRACT ROOF SECTION

TYPICAL DETAIL : 220/45 ALPINE RETRACT ROOF WITHIN LOUVRETEC STRUCTURAL FRAME



CROSS SECTION SHOWING DRIVE FRAME, BLADE, GUTTER & FLASHING WITHIN 300X50 BOX SECTION FRAME

TYPICAL DETAIL : FALL & CLEARANCES ON RETRACT BLADES



RETRACT ROOFS ARE TYPICALLY INSTALLED LEVEL
FALL ACROSS THE BLADES IS ACHIEVED WITH THE BLADES SET HIGHER ON THE DRIVE SIDE, FALLING 60mm TO THE PASSIVE SIDE.

60mm FALL IS COMMON ON ALL RETRACTS IRRESPECTIVE OF BLADE LENGTH.