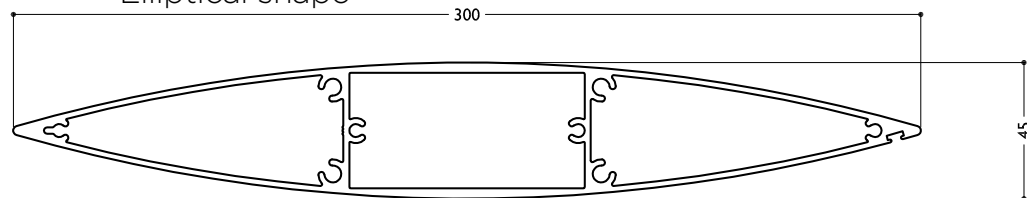


GROUP 4 LOUVRE

Maxi Airfoil shaped louvre: 300MM MAXI LOUVRE

300MM MAXI LOUVRE

Elliptical shape



NTS

The 300mm Maxi Louvre is now available in a motorised option using Louvretec's new Maxi-Drive pivot system.

This new pivot system hides both the motor and pivot mechanism within a structural aluminium support frame.

Powered by Somfy, Maxi-Drive incorporates both a reduction gearbox and supporting drive arm, providing strength needed for pivoting large blade louvres. Ideal for both residential and commercial applications.

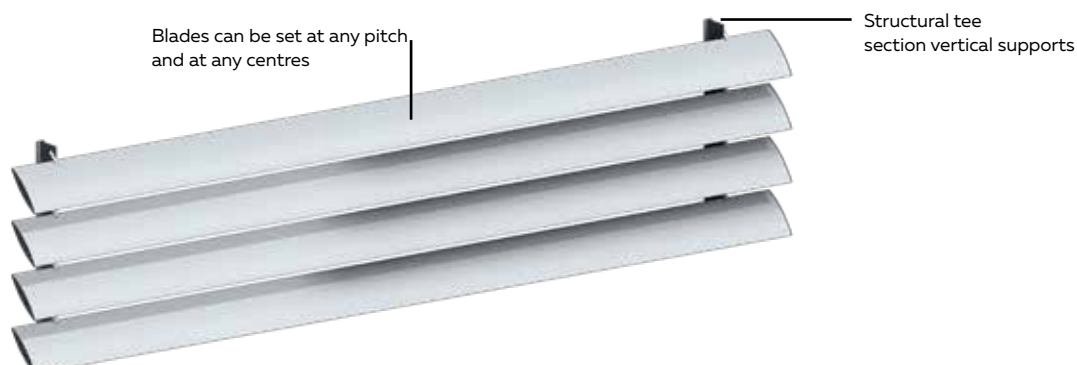
Also available as End or Bracket Fixed, Horizontal or Vertical Overhead Panels.



300MM MAXI LOUVRE

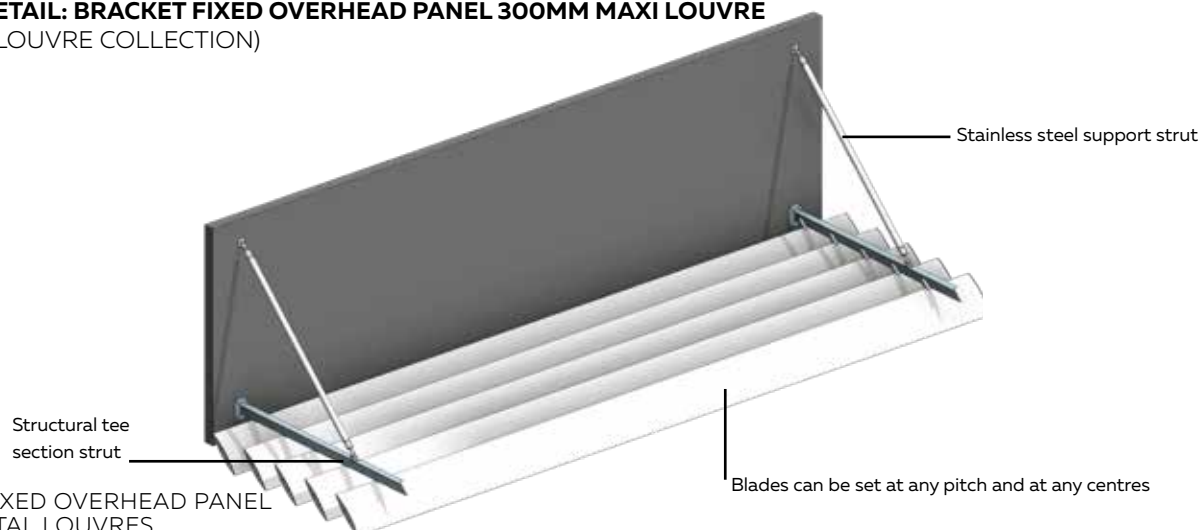
REFER TECHNICAL DETAILS
PAGE 10.4.32

TYPICAL DETAIL: BRACKET FIXED VERTICAL PANEL 300MM MAXI LOUVRE (GROUP 4 LOUVRE COLLECTION)

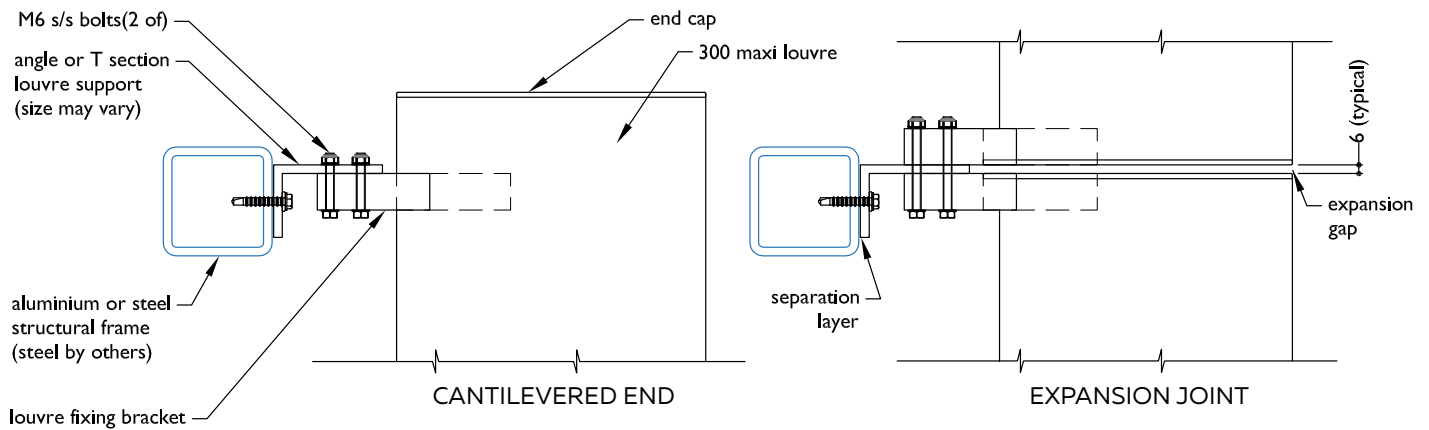
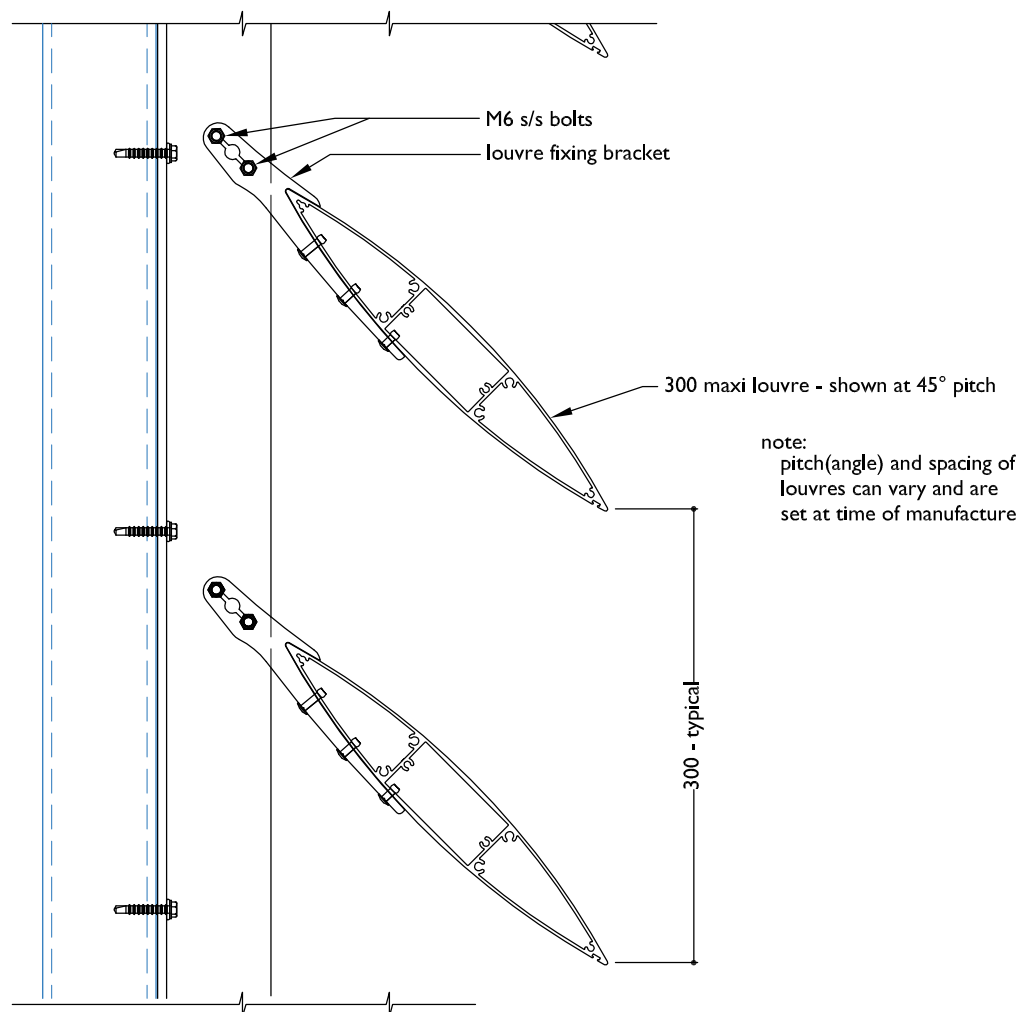


BRACKET FIXED
VERTICAL PANEL - HORIZONTAL LOUVRES

TYPICAL DETAIL: BRACKET FIXED OVERHEAD PANEL 300MM MAXI LOUVRE (GROUP 4 LOUVRE COLLECTION)



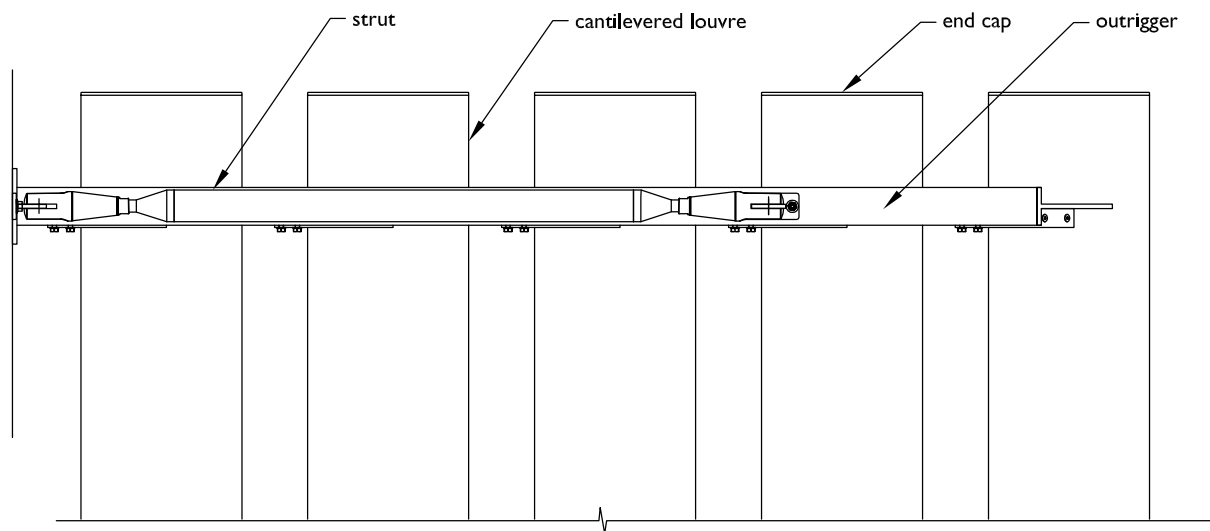
BRACKET FIXED OVERHEAD PANEL
- HORIZONTAL LOUVRES

PLAN - BRACKET FIXED 300MM MAXI LOUVRE**SECTION - BRACKET FIXED 300MM MAXI LOUVRE****BRACKET FIXED 300MM MAXI LOUVRE**

TYPICAL DETAIL : BRACKET FIXED EYEBROW CONFIGURATION
300MM MAXI LOUVRE PANEL

(GROUP 4 LOUVRES COLLECTION)

PLAN - BRACKET FIXED 300MM MAXI LOUVRE - EYEBROW CONFIGURATION



SECTION - BRACKET FIXED 300MM MAXI LOUVRE - EYEBROW CONFIGURATION

