

CONNECTING TO THE BUILDING

Three typical fixing locations

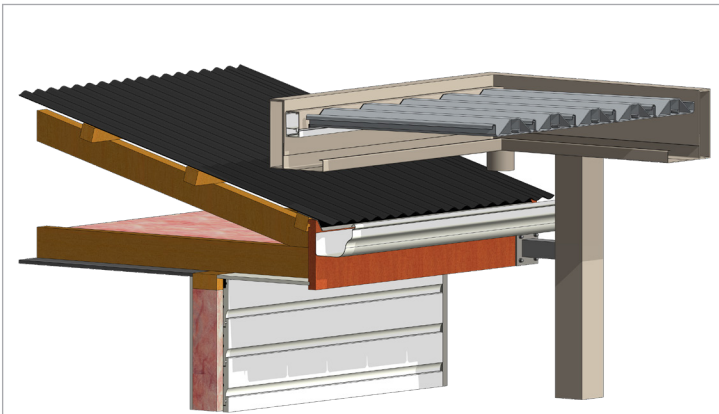
In most instances, the aluminium structural frame connects either directly to or directly alongside the existing building.

There are three typical fixing locations:

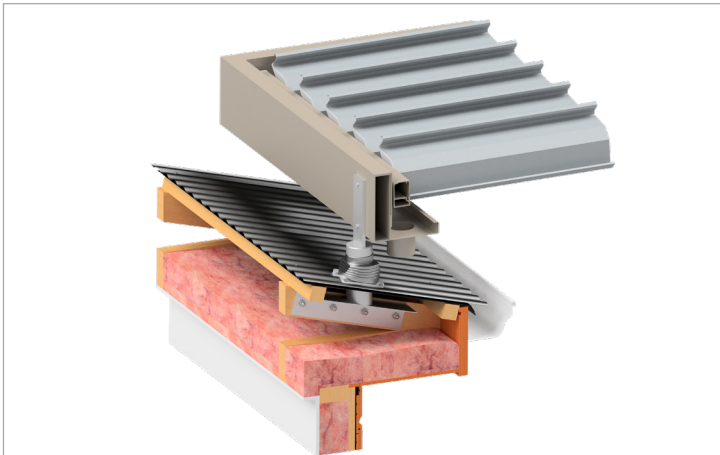
- 1. Fixing above the existing roof
- 2. Fixing flush with the existing gutter
- 3. Fixing directly to - or free standing next to the building



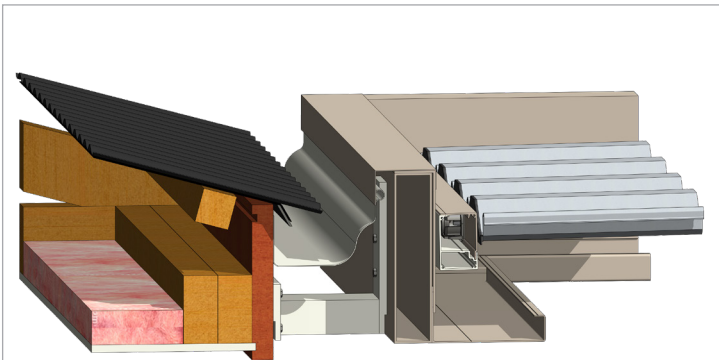
AUCKLAND, NEW ZEALAND



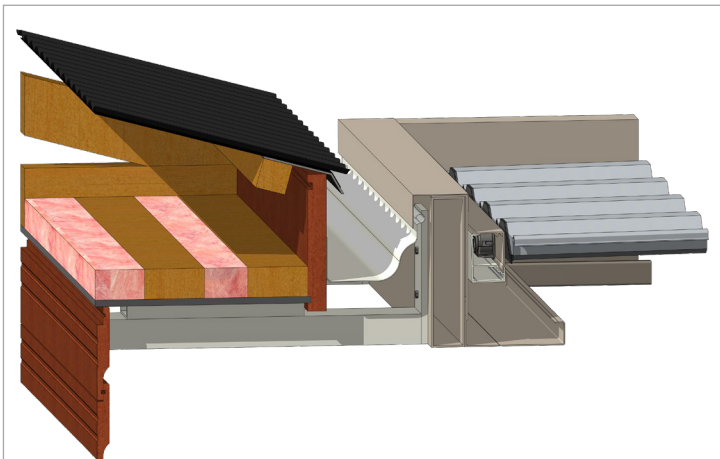
1A. OVER ROOF - BRACED OR FREE STANDING POST
Page 4.16



1B. OVER ROOF - RAFTER FIXING BRACKET
Page 4.17



2A. FLUSH TO GUTTER. BRACKET FIXED TO FASCIA
Page 4.18



2B. FLUSH TO GUTTER. BRACKET FIXED TO SOFFIT
Page 4.19



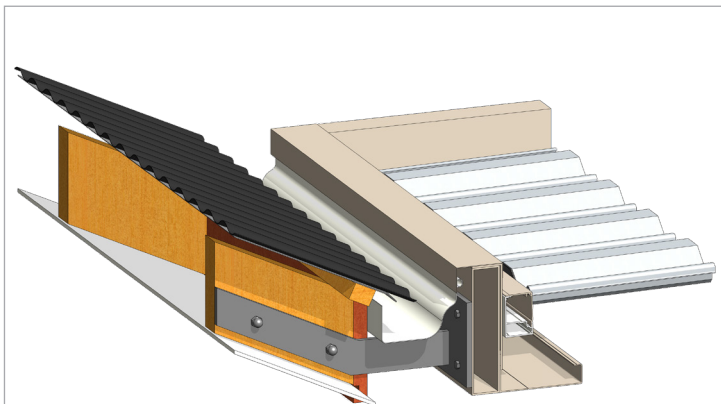
HAHEI, NEW ZEALAND

CONNECTING TO THE BUILDING

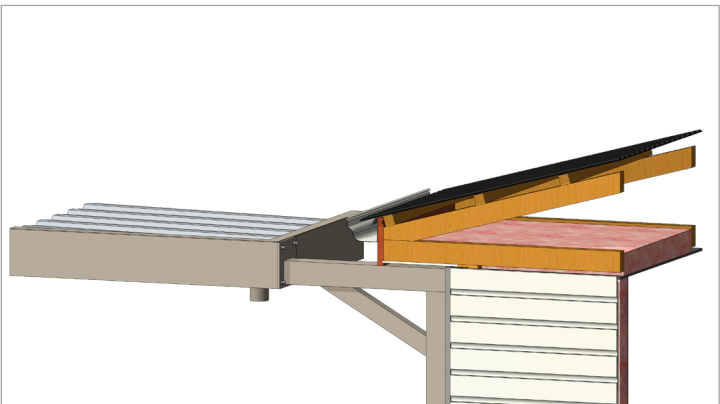
Fixing options

Location determines which suitable fixing options are available and are permissible.

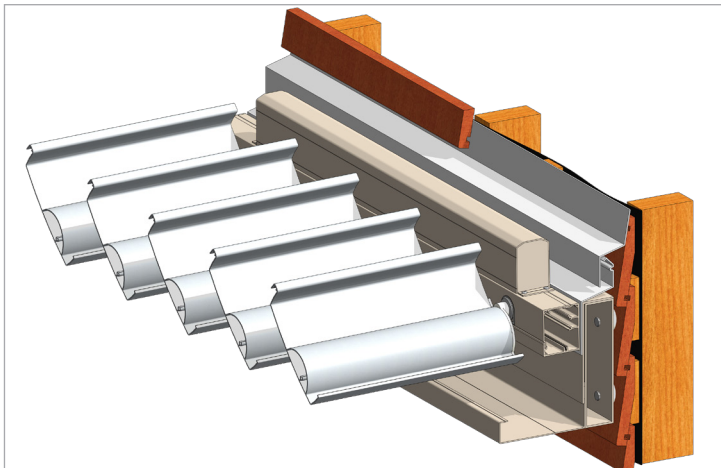
Fixing options must take into consideration the structural integrity of the building – i.e, is there solid fixing available? Also ensuring the watertight integrity of the building is not compromised. .



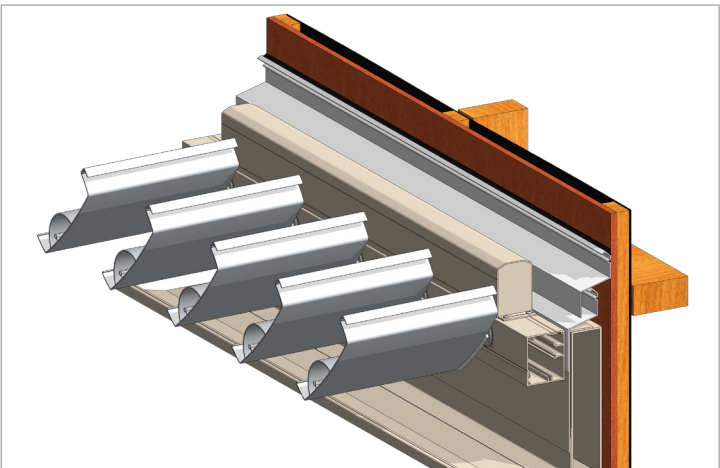
2C. FLUSH TO GUTTER. BRACKET FIXED TO RAFTER.
Page 4.20



2D. FLUSH TO GUTTER. FREE STANDING BRACED POST
Page 4.21



3A. FIXING DIRECTLY TO BUILDING. WEATHERBOARD ON
TIMBER FRAME WITH CAVITY. Page 4.22



3B. FREE STANDING SHEET
ON TIMBER FRAME. Pages 4.24 & 4.25