

TWO FIXING SYSTEMS

2. Face Fixed option

This system is based on typical aluminium joinery design, incorporating a facing to all four sides of the outer frame.

In contrast to the Flush Fixed option, this section incorporates a flange to the outer frame enabling the glass panel to be fixed directly through the flange to the face of the opening.

A glazing channel clip provides cover to hide the fixings.

The flange may be ripped smaller at the glazing channel rip line.



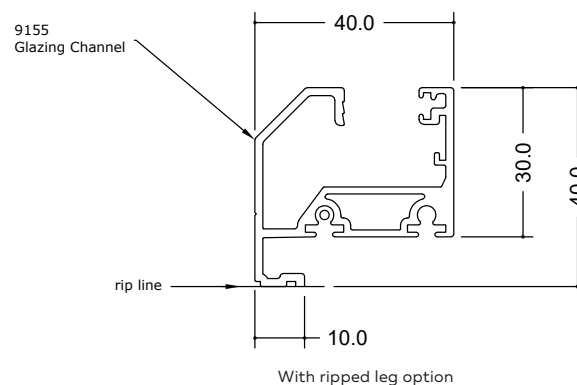
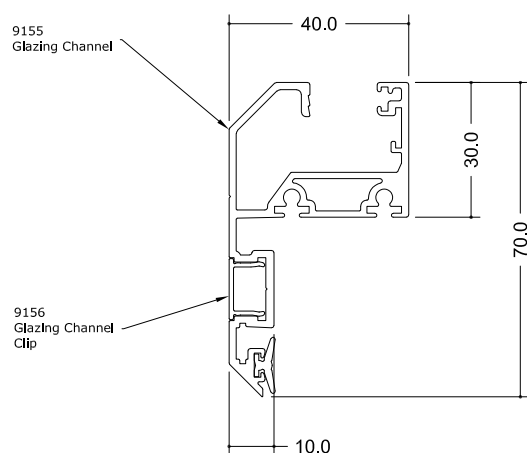
OVERHEAD RECTANGULAR PANELS



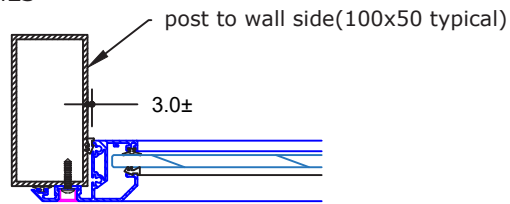
OVERHEAD RAKING PANELS



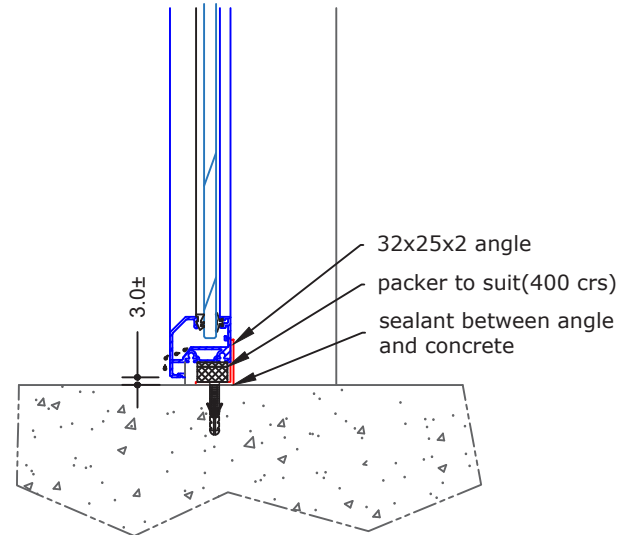
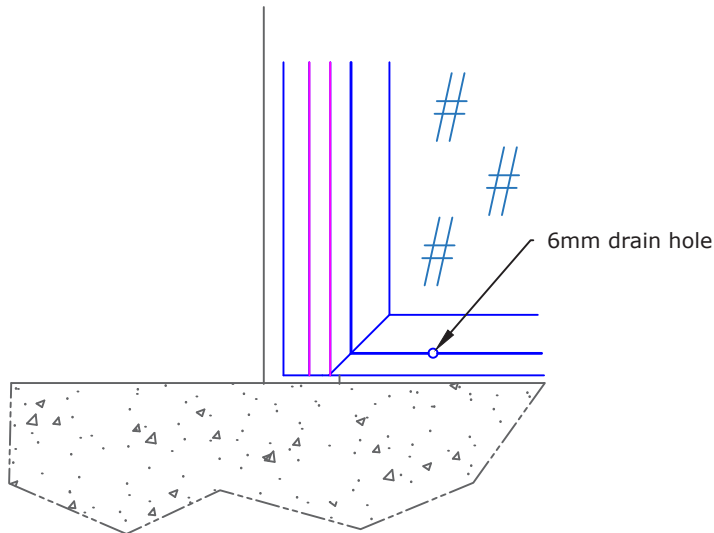
FIXED GLAZING PANELS



TYPICAL FIXING DETAILS

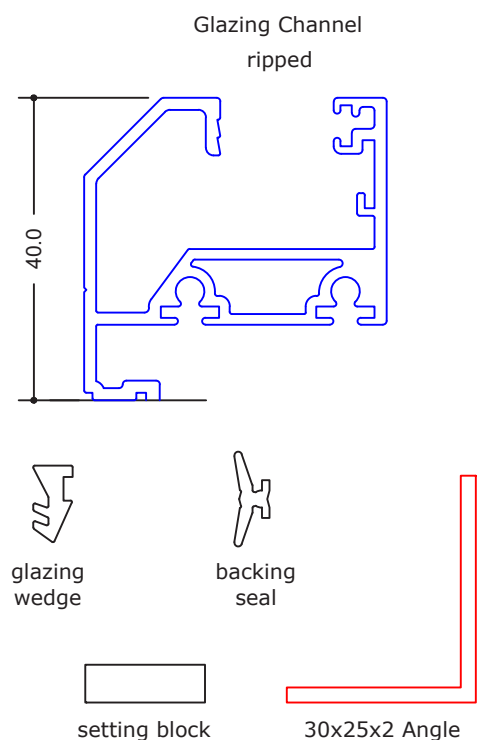
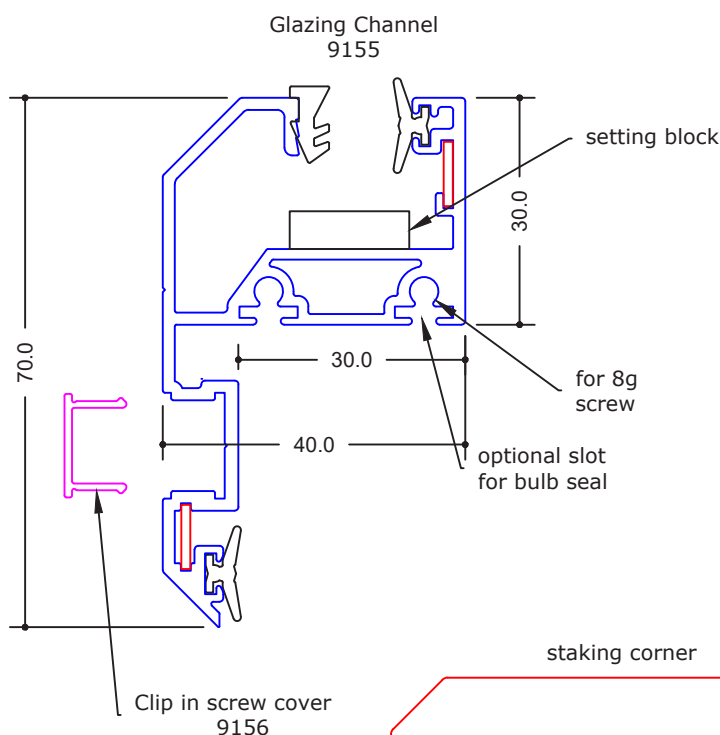


H - WITHOUT POST FOOT



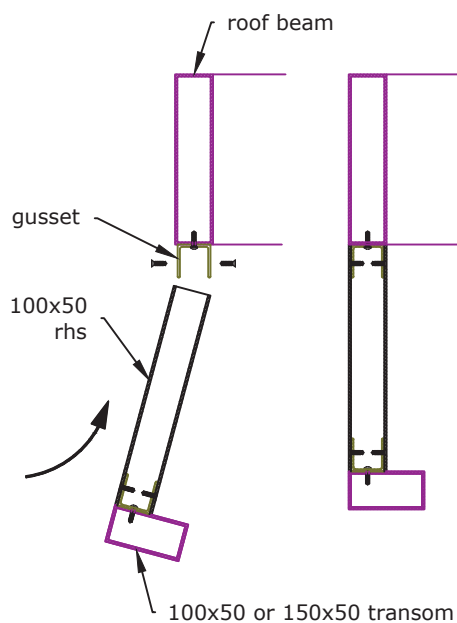
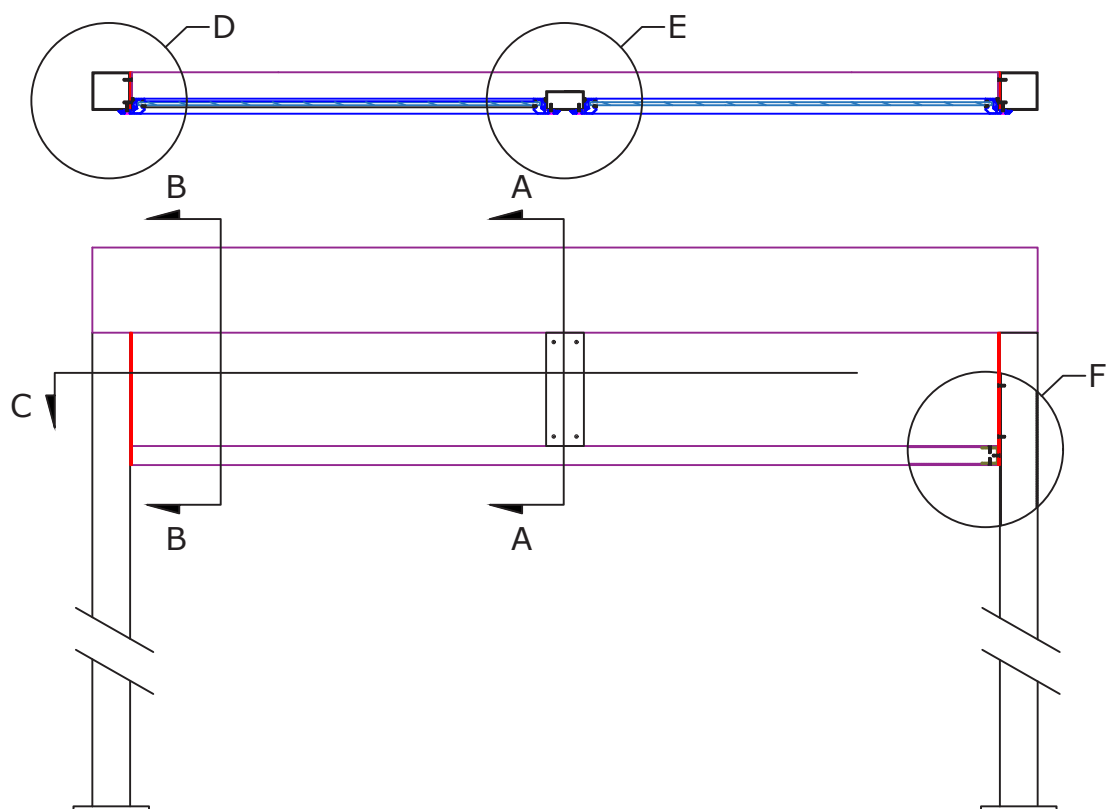
SECTION H

COMPONENTS

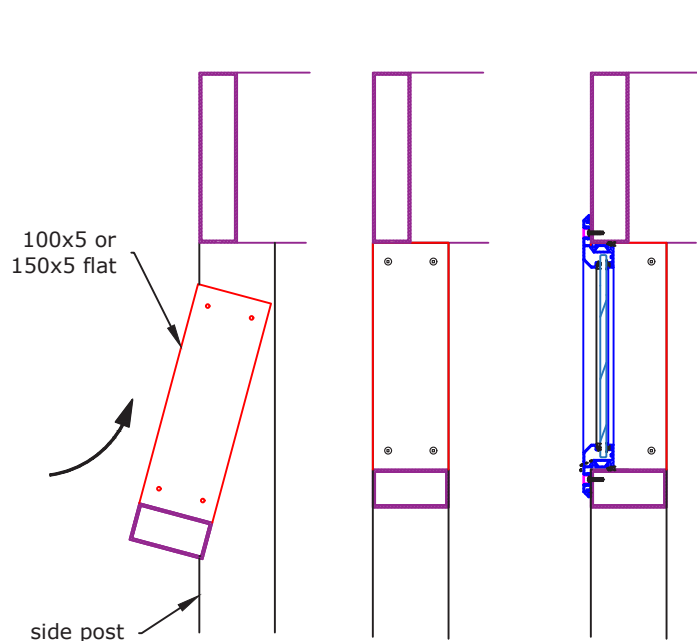


**TYPICAL DETAIL:
SLIDETEC FACE FIXED, FIXED GLAZING PANELS**

TYPICAL FIXING DETAILS

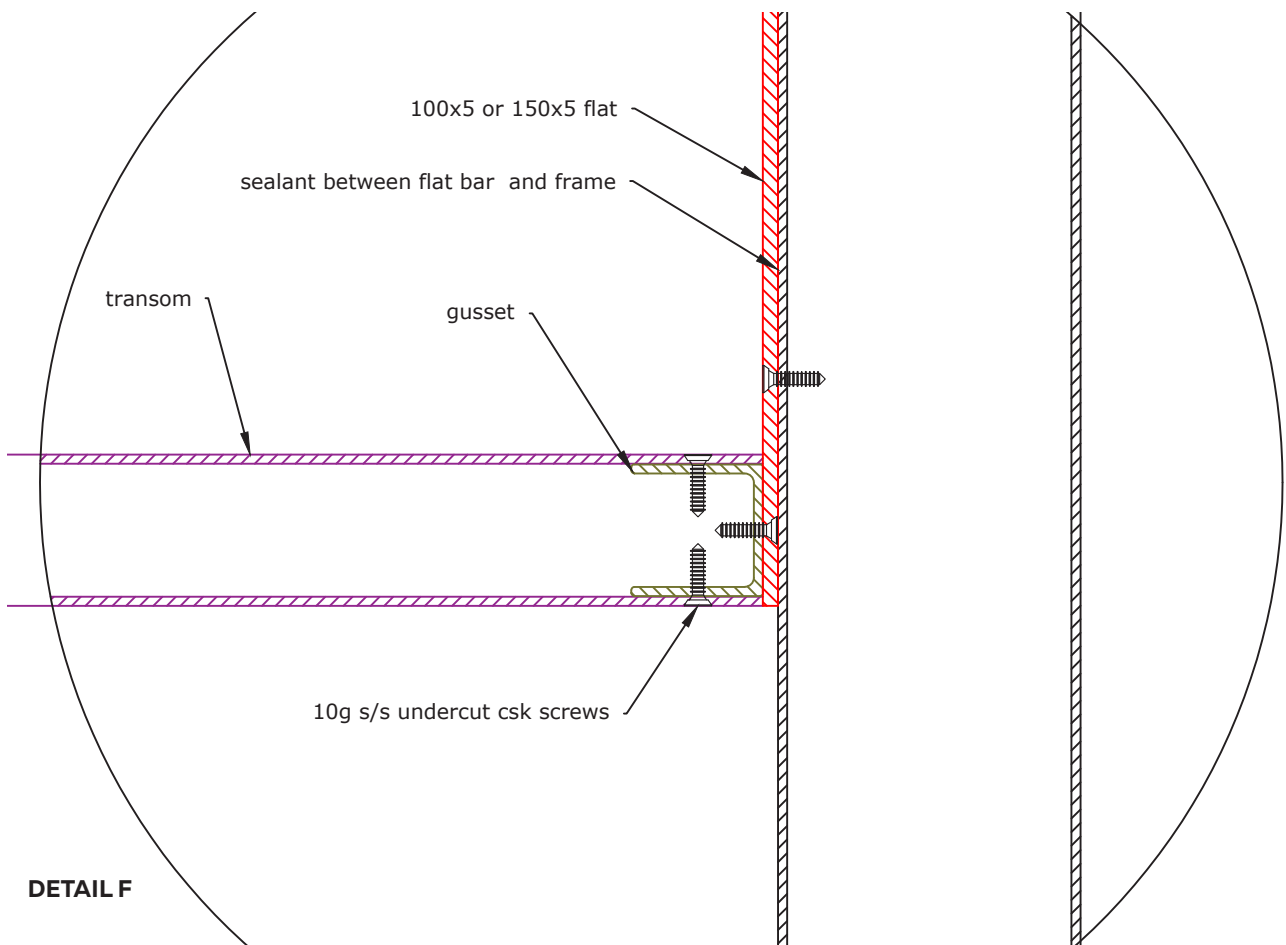
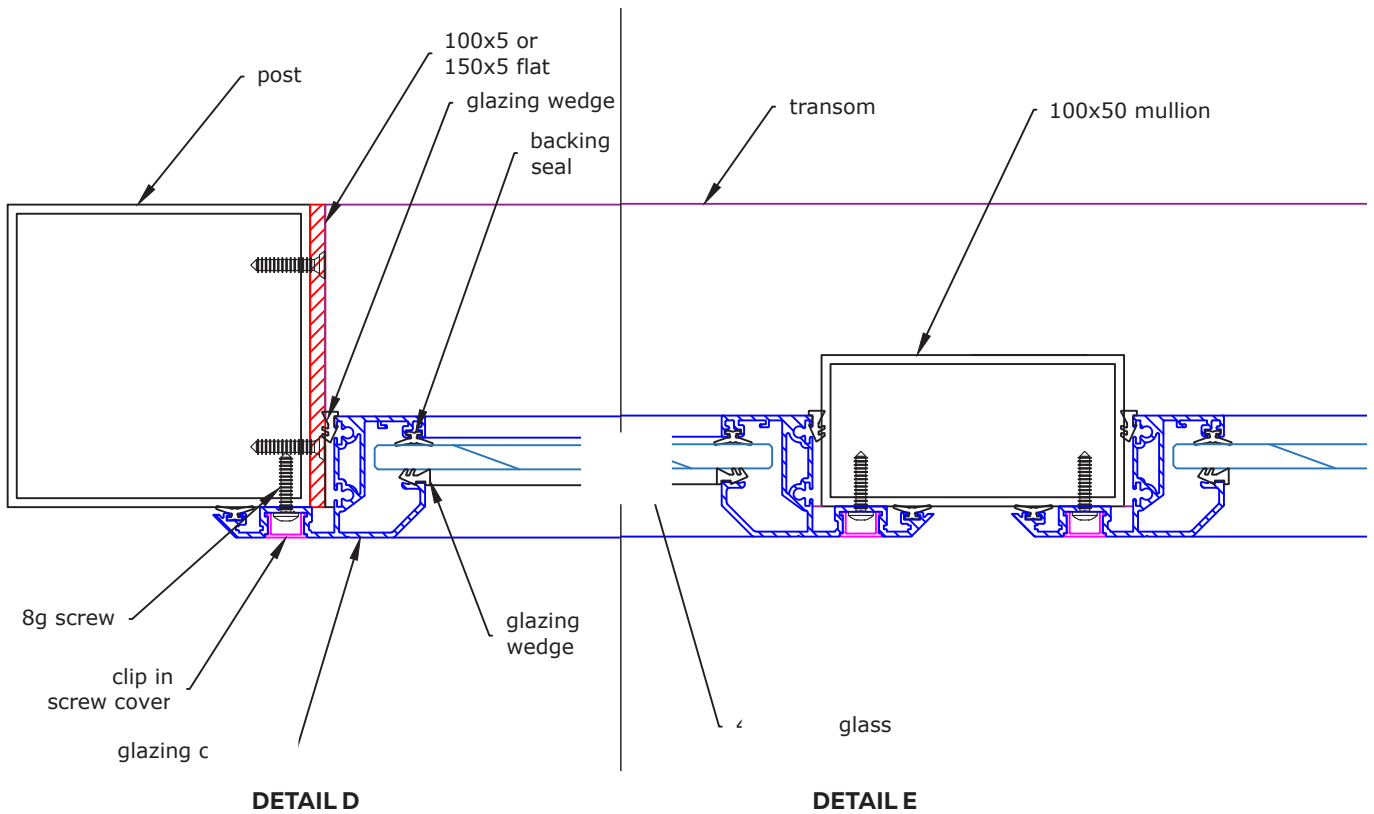


SECTION A: MULLION FIXING



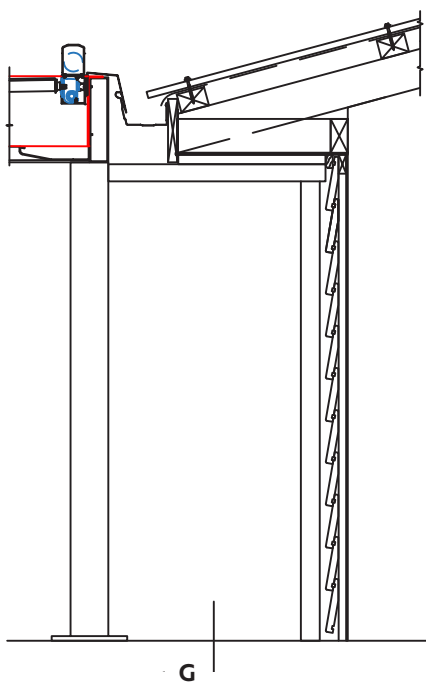
SECTION B: TRANSOM FIXING AT SIDES

TYPICAL FIXING DETAILS

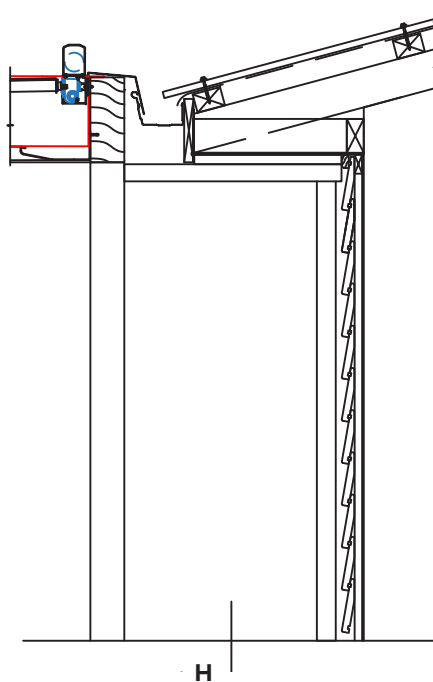


**TYPICAL DETAIL:
SLIDETEC FACE FIXED, FIXED GLAZING PANELS**

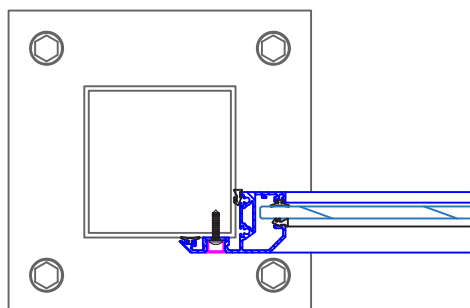
TYPICAL FULL HEIGHT FIXED PANELS



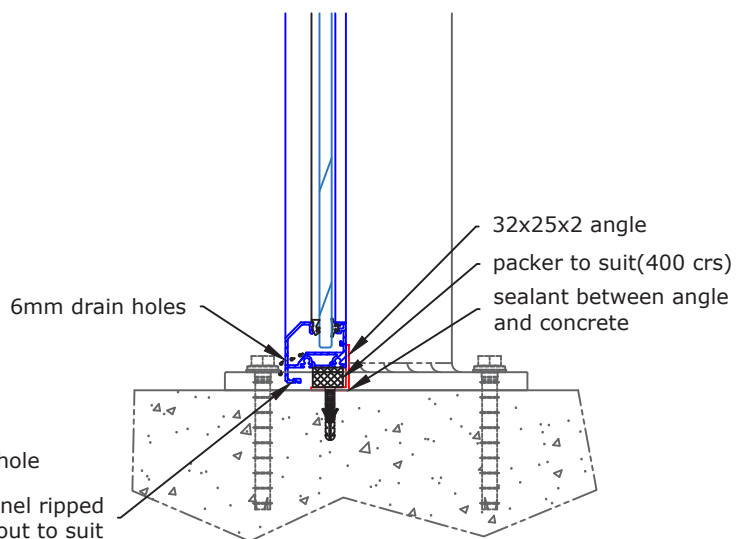
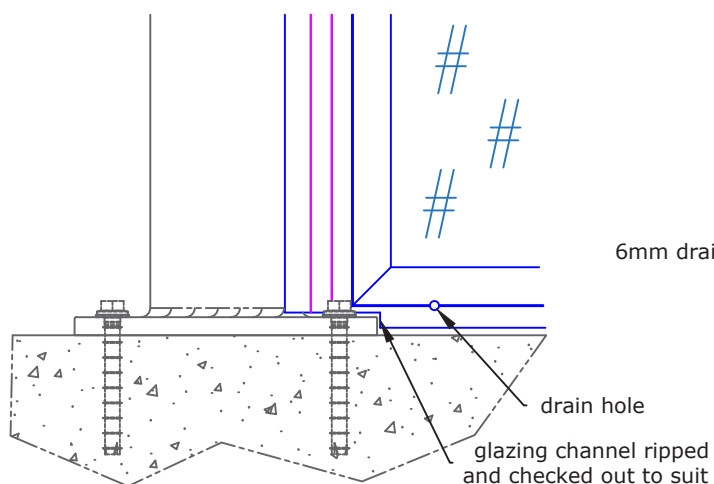
WITH POST FOOT



WITH POST FOOT



G - WITH POST FOOT



SECTION G