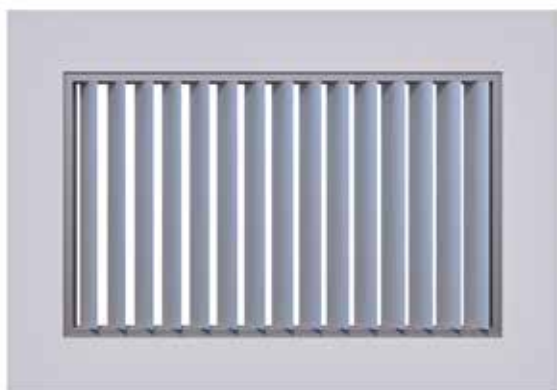


## VERTICAL SPIRAL PIVOT SUN LOUVRE PANELS

Installation: Blades can be installed vertically or horizontally



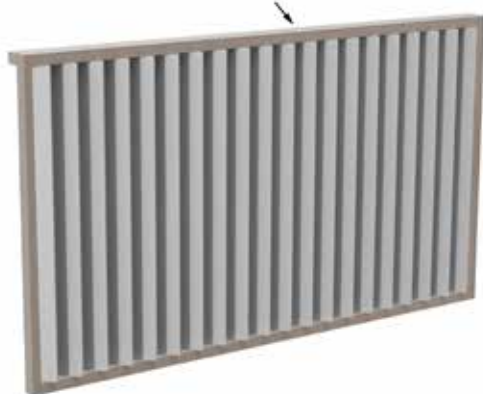
**1. VERTICAL MOTORISED LOUVRE PANEL WITH BLADES RUNNING VERTICALLY, FITTING INTO AN EXISTING OPENING**



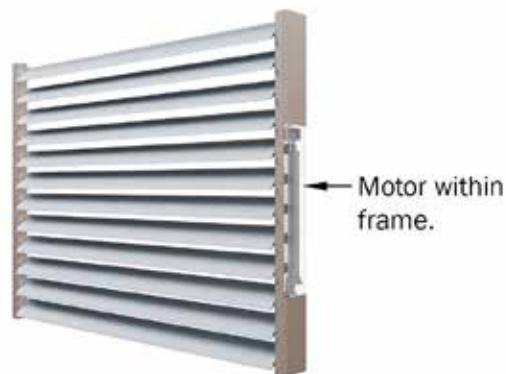
**2. VERTICAL MOTORISED LOUVRE PANEL WITH BLADES RUNNING HORIZONTALLY, FITTING INTO AN EXISTING OPENING**

### Location of Motor

Downunder Frame & Motor Cover



**1. FRAME IS FOUR SIDED WRAP AROUND. DRIVE AND PIVOT SIDES ARE CONNECTED WITH PASSIVE END FRAMES**



**2. FRAME IS TWO SIDED ONLY, DRIVE AND PIVOT SIDES**

### Hand Operable

**VERTICAL LOUVRES CAN BE HAND OPERATED WITH A GEARBOX & CRANK HANDLE**

**REFER TO PAGE 10.2.14**



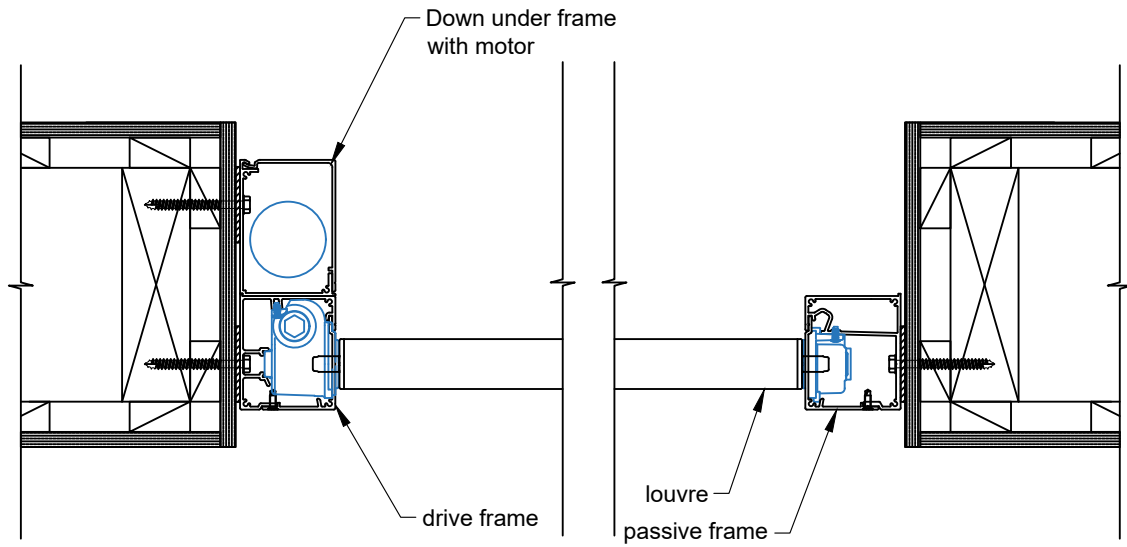
### VERTICAL PANELS

- Short crank handles for easily accessible vertical panels are available in three standard lengths; 30mm, 95mm, 150mm
- Refer to page 10.2.14 for details

### OVERHEAD PANELS

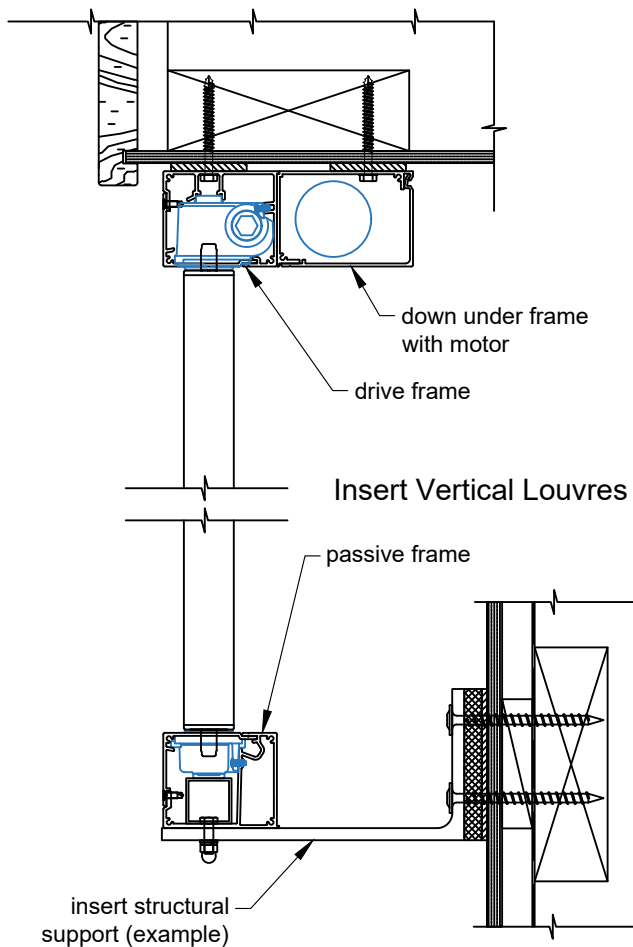
- Overhead access is made easy with hook handles available in the following standard lengths; 600mm, 900mm 1200mm, 1500mm, 1800mm
- A short or long eyelet is also available.

INSERT HORIZONTAL LOUVRES - PLAN VIEW

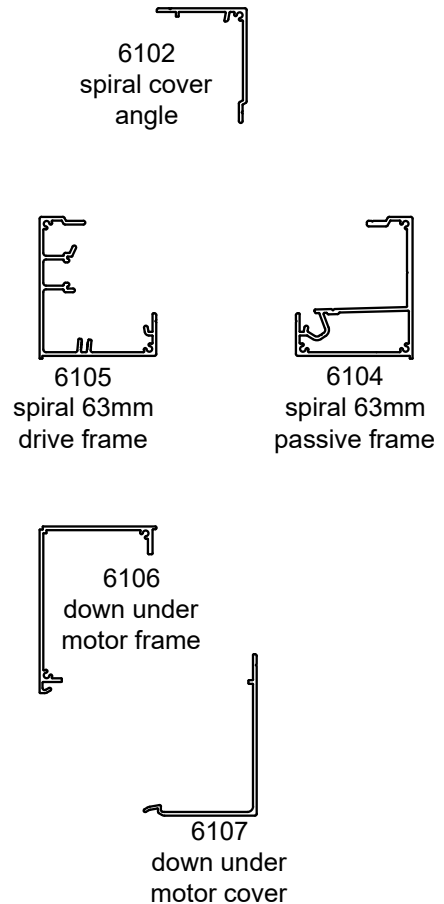


Insert Horizontal Louvres

INSERT VERTICAL LOUVRES - SECTION VIEW

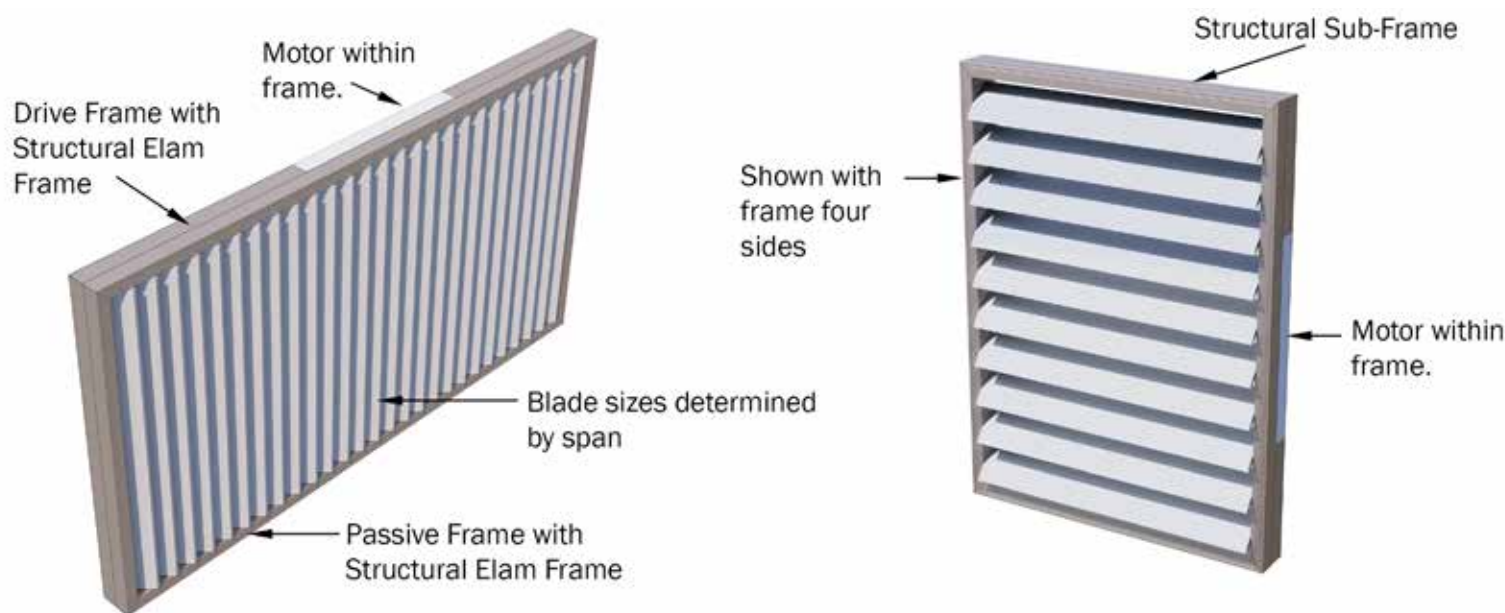


DRIVE, PASSIVE & DOWN UNDER FRAMES



## VERTICAL SPIRAL PIVOT SUN LOUVRE PANELS

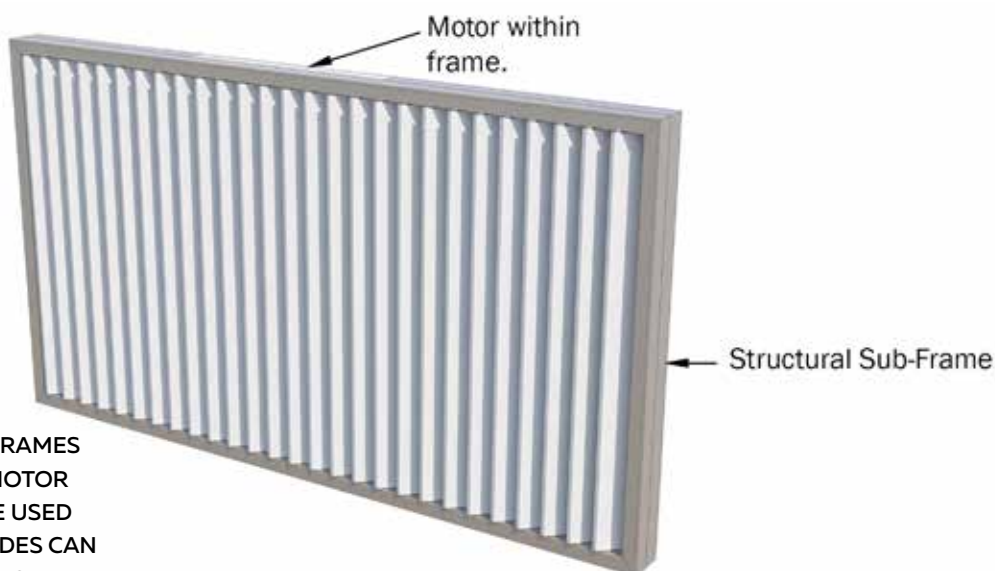
Installation: Blades can be installed vertically or horizontally in a Structural Sub-Frame



1. VERTICAL MOTORISED SUN LOUVRES RUNNING VERTICALLY, FITTING WITHIN AN ELAM STREET STRUCTURAL SUB-FRAME

2. VERTICAL MOTORISED SUN LOUVRES RUNNING HORIZONTALLY, FITTING WITHIN AN ELAM STREET STRUCTURAL SUB-FRAME

### Location of Motor



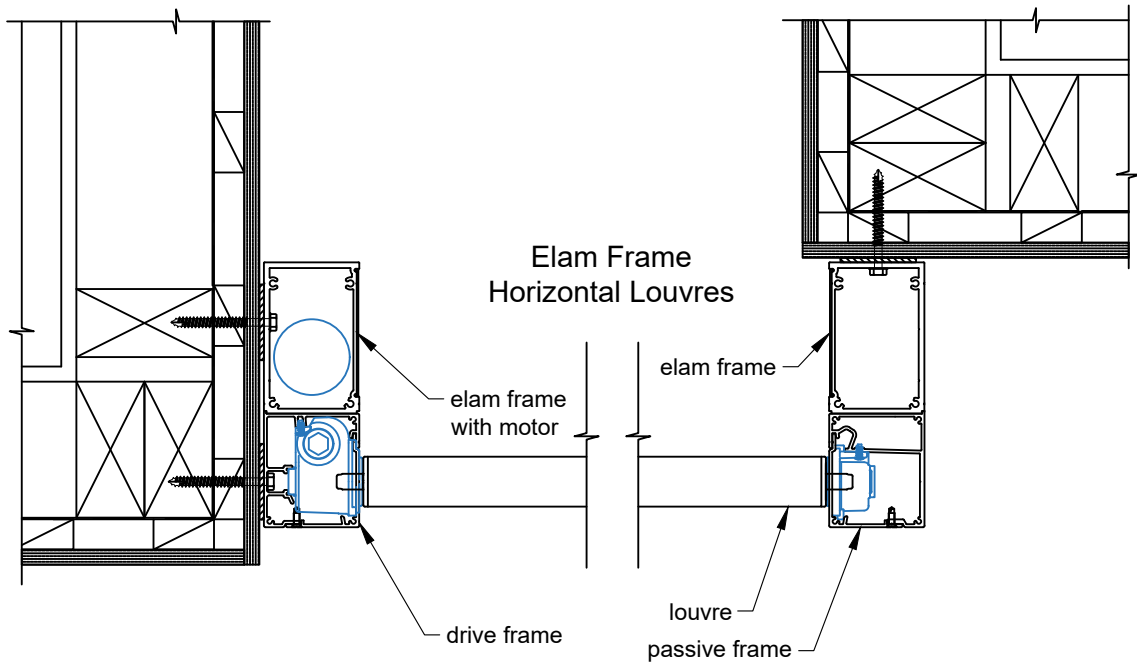
ELAM STREET STRUCTURAL SUB-FRAMES EXTEND ALL FOUR SIDES HIDING MOTOR & WIRING. DEPENDING ON LOUVRE USED CONFIGURATION DRIVE & PIVOT SIDES CAN BE EITHER TOP OR BOTTOM, RIGHT OR LEFT

### Hand Operable

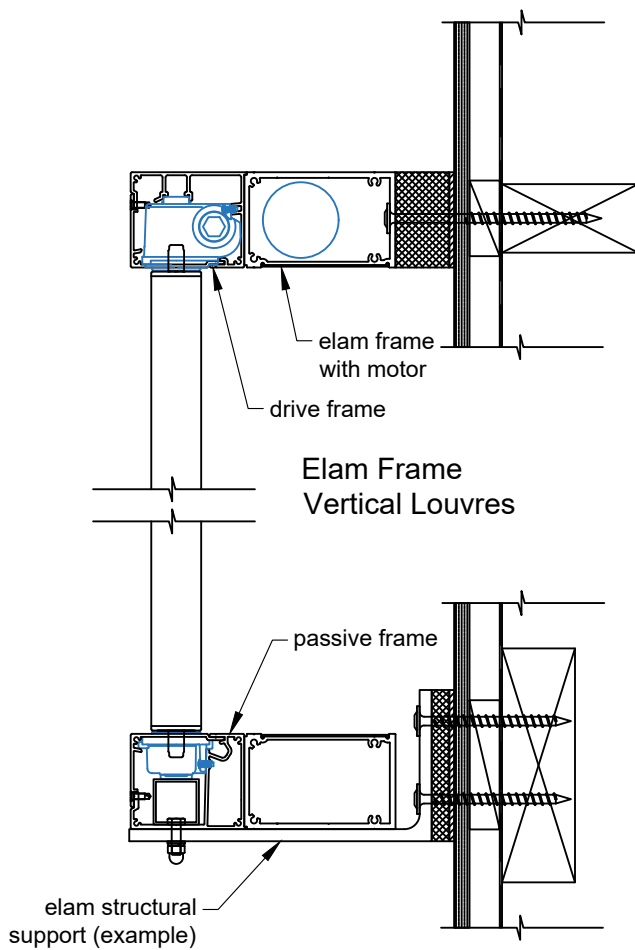
Due to the Structural Frame sitting outside the building, very few Elam Street panels are hand operated as this would require the gearbox shaft protruding through the building. Conventional Motorised or Solar Powered Motorisation (if no power is available) are the preferred options.

# TYPICAL DETAIL: VERTICAL SUN LOUVRE PANELS REQUIRING AN ELAM STREET STRUCTURAL SUB-FRAME

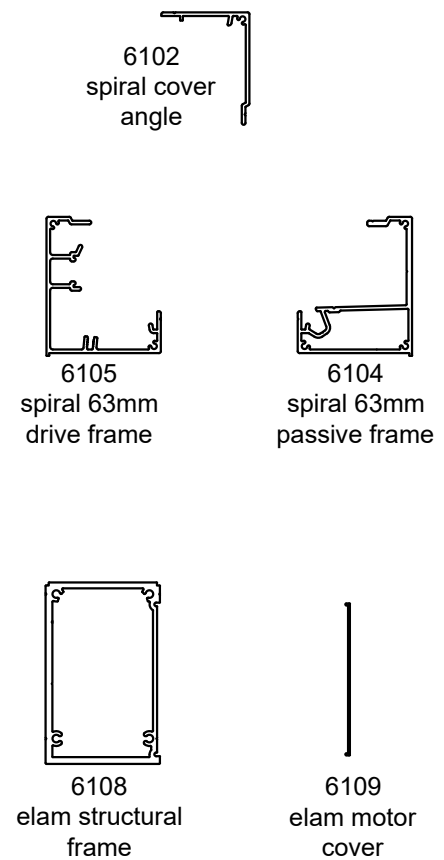
## ELAM STREET STRUCTURAL SUB-FRAME - HORIZONTAL LOUVRES - PLAN VIEW



## ELAM STREET STRUCTURAL SUB-FRAME VERTICAL LOUVRES - SECTION VIEW



## ELAM STREET STRUCTURAL SUB-FRAMES



## DRIVE SYSTEM - SPIRAL PIVOT

### Vertical Balustrades

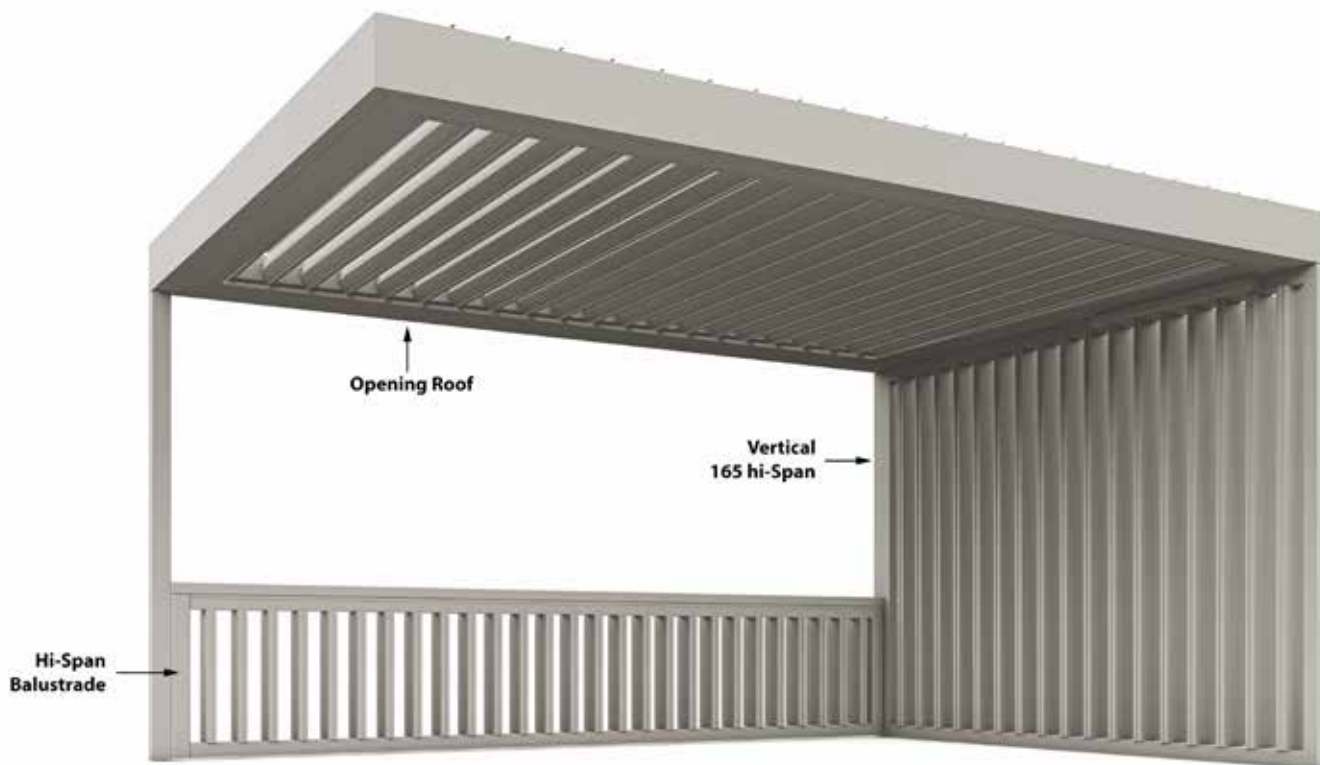
Louvretec's Hi-Span Spiral Pivot operated balustrade louvre system has been designed to meet Australian & NZ Standards.

- Motorised or hand-operated this unique louvre system can be used as a balustrade, spanning up to 3000mm high.
- 165mm Hi-Span opens to a maximum of 125mm as required in Australia.
- 135mm Hi-Span opens to a maximum of 100mm as required in NZ
- The louvre is rated to be used as an infill panel only.
- Structural balustrade support of the infill panel by others.



HAND OPERABLE HI-SPAN BALUSTRADE

### 1M PLUS AND FULL HEIGHT BALUSTRADE LOUVRES



VERTICAL HI-SPAN BALUSTRADE