

## OPTIONS & FEATURES

- Outdoor Blinds provide great protection during every season, protecting from UV, wind, rain and dust.
- Outdoor Blinds are custom made to exact measures ensuring a perfect fit.
- Easy to operate, lightweight spring-loaded Outdoor Blinds are easy to push up or pull down. Let the blind go and it will stay in the chosen position.
- All Mesh Outdoor Blinds can be motorised. The same Louvretec remote control that operates your Opening Roof also operates your Outdoor Blinds.
- Most Outdoor Blinds incorporate a centrally mounted locking mechanism in the handle allowing the blinds to be locked when fully down.
- 'Ziptrack' style systems fit snug between the side frame and the skin. This provides a no rattle fit.
- Modern, heavy duty option Outdoor Blinds with mesh infills can now span up to 5.8m wide.
- Your Louvretec Dealer will advise how best to integrate the Outdoor Blind seamlessly into the Louvretec installation. Powder coat colour of your choice.



PROTECTION DURING EVERY SEASON



MOTORISED MESH SHADE BLINDS & OPENING ROOF



CHOOSE FROM A RANGE OF MESH DENSITY LEVELS OF 'OPEN-NESS'

**MOTORISED OR HAND OPERATED**  
Controller and Sensor Options  
Refer Section 1 for range of options

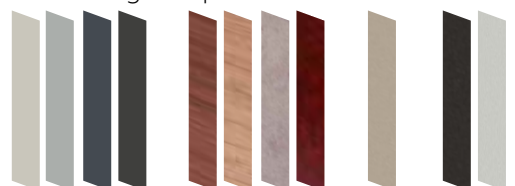


**SPRING ASSIST**  
Outdoor Blind will stay in chosen position.



PULL DOWN | PUSH UP

**SURFACE FINISHING OPTIONS**  
A wide range of options are available.





MESH SHADE BLIND



A LARGE RANGE OF MESH DENSITY OPTIONS IS AVAILABLE

## THE OUTDOOR BLIND INFILL OR SKIN:

### Mesh Outdoor Blinds

By far the majority of Outdoor Blinds in residential installations choose Mesh skins.

- There is an ever increasing range of superb fiberglass based skin options available.
- Choose from a wide range of colours. Warranties differ between manufacturers – enquire when ordering.
- Choose from a wide range of mesh density options providing up to 99% UV block and 96% wind block.
- Outdoor Blinds over 3500mm width (depending on wind zone) must have mesh skins.
- Mesh Outdoor Blinds can span up to and in some cases over 6000mm depending on wind zone.
- Only Mesh Outdoor Blinds can be motorised.

## OR PVC

### PVC Outdoor Blinds

- Louvretec supplied PVC Outdoor Blinds carry a one year workmanship and product warranty – excluding the PVC skins.
- PVC skins provide for maximum views and rain protection, however due to the unstable nature of PVC there is no manufacturers warranty available for the PVC skin itself.
- PVC Blinds cannot be motorised.
- PVC Blinds can span up to a maximum of 3500mm depending on wind zone.
- PVC Blinds can react adversely to both heat and cold. Please discuss further with your Louvretec Dealer.



CLEAR PVC BLIND

### KEY OPTIONS & FEATURES AT A GLANCE

#### Moveable Walls:

- Outdoor Blinds are a perfect fit with a Louvretec Room.
- With an Opening or fully Retractable Roof overhead, vertically retractable walls further enhance the total indoor/outdoor experience.

#### Weather Protection when you need it:

- Sealed Mesh & Clear PVC outdoor blinds can be customised to provide the level of weather protection you require.
- Protect your space from wind, rain, glare and cold weather

#### Environmentally Friendly:

- Protection from heat and UV in summer
- Helping to close in and capture warmth in winter – enjoy outdoor living all year round.

#### Easy to Operate:

- Mesh blinds only can be motorized, as well as hand operable – simple individual or group control at the touch of a button.
- Clear PVC blinds are only offered as hand operable
- Hand operated push up / pull down is made easy with the use of an internally mounted spring balanced assist system.
- Lightweight and simple to use, the blind will stay firm in the designated position without rattling in the wind.





## KEY OPTIONS & FEATURES AT A GLANCE

### Recommended Maximum Spans:

- The inclusion of extra heavy-duty bottom rails has enhanced achievable spans.
- Mesh blinds up to 3500mm high can span up to, and in some cases over 5800mm depending on wind zones.
- Clear PVC blinds up to 3500mm high are recommended to span no more than 3500mm.
- Openings exceeding the above require either a fixed or removable mid-post.

### Pelmets for Louvretec Blinds:

- Unless stated otherwise by your Louvretec Dealer full aluminium pelmets are standard for all Mesh blinds.
- A half pelmet only, protecting the outside of the roll is recommended for Clear PVC blinds.

### Colour Options:

- A full range of powder coat colours ensure the perfect match for stand-alone or Louvretec Room installations

### Sunscreen Mesh:

- Is available in a wide range of colours and transparencies
- Up to 99% UV block
- Up to 96% wind block
- Allows airflow and reduces sun glare
- Easy to maintain, extremely durable and provides high degree of privacy during the day

