

THE LOUVRETEC STRUCTURAL FRAME

Post and Beam sizes determined by wind and loading

REFER TO RELEVANT DESIGN INFORMATION
Engineering Section 13/ENGINEERING REPORTS

- The post and beam sizes are calculated and determined by wind speeds with loading factors applied to allow for uplift, down pressure and deflection.
- Please refer Section 13 - Engineering for full engineering and design data.
- For any queries please contact your nearest Louvretec Dealer.



SINGLE BEAM



TWO SINGLE BEAMS, MITRED CORNER



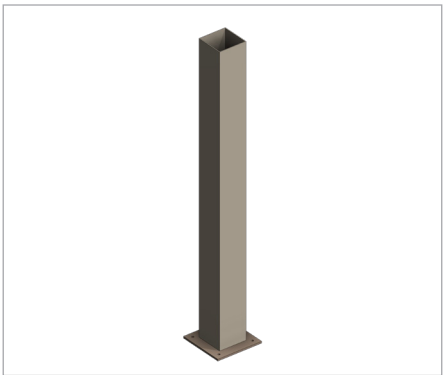
DOUBLE BEAM



DOUBLE BEAM WITH SINGLE BEAM



TWO DOUBLE BEAMS, MITRED CORNER



POST WITH BASE PLATE



150X50X3



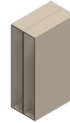
200X50X3 2/200X50X3



225X50X3 2/225X50X3



250X50X3 2/250X50X3 3/250X50X3



300X50X3 2/300X50X3.5 3/300X50X3.5