

outdoor blinds

By Louvretec



Gallery and Overview
Overview and options
Product Warranty

6.02 – 6.06
6.07 – 6.12
6.13 – 6.16





OUTDOOR BLINDS



Protection during every season

GALLERY OUTDOOR BLINDS



1. MESH SHADE BLIND 2. MESH SHADE BLIND 3. OUT TO THE OUTDOOR ROOM 4. MESH SHADE BLIND



5. MESH SHADE BLIND 6. OUTDOOR ROOM 7. MESH SHADE BLIND 8. OUTDOOR ROOM



MOTORISED OUTDOOR BLINDS - PART OF A LOUVRETEC OUTDOOR ROOM. EACH BLIND SPANNING 5.4 METRES



MT EDEN, AUCKLAND



RED BEACH, AUCKLAND

OUTDOOR BLINDS

External screening options

Outdoor Blinds are a popular option when considering closing in a Louvretec Room or outdoor space.

Louvretec does not offer a proprietary 'Louvretec branded' Outdoor Blind. There are many excellent brands of Outdoor Blinds available, giving Louvretec Dealers a wide range of product options best suited to compliment a Louvretec installation. The best of both worlds.

Custom made

All Outdoor Blinds destined to fit within a Louvretec installation are individually site measured and custom made accordingly.

Many Louvretec Dealers carry mill finish stocks & manufacture the Outdoor Blinds themselves with others receiving kits from their local Outdoor Blind supplier.



LOUVRETEC ROOM (OPPOSITE PAGE) AS VIEWED FROM INSIDE
MT EDEN, AUCKLAND

OPTIONS & FEATURES

- Outdoor Blinds provide great protection during every season, protecting from UV, wind, rain and dust.
- Outdoor Blinds are custom made to exact measures ensuring a perfect fit.
- Easy to operate, lightweight spring-loaded Outdoor Blinds are easy to push up or pull down. Let the blind go and it will stay in the chosen position.
- All Mesh Outdoor Blinds can be motorised. The same Louvretec remote control that operates your Opening Roof also operates your Outdoor Blinds.
- Most Outdoor Blinds incorporate a centrally mounted locking mechanism in the handle allowing the blinds to be locked when fully down.
- 'Ziptrack' style systems fit snug between the side frame and the skin. This provides a no rattle fit.
- Modern, heavy duty option Outdoor Blinds with mesh infills can now span up to 5.8m wide.
- Your Louvretec Dealer will advise how best to integrate the Outdoor Blind seamlessly into the Louvretec installation. Powder coat colour of your choice.



PROTECTION DURING EVERY SEASON



MOTORISED MESH SHADE BLINDS & OPENING ROOF



CHOOSE FROM A RANGE OF MESH DENSITY LEVELS OF 'OPEN-NESS'

MOTORISED OR HAND OPERATED

Controller and Sensor Options
Refer Section 1 for range of options



SPRING ASSIST

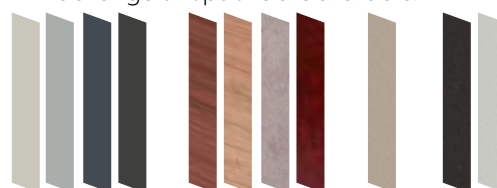
Outdoor Blind will stay in chosen position.



PULL DOWN | PUSH UP

SURFACE FINISHING OPTIONS

A wide range of options are available.





MESH SHADE BLIND



A LARGE RANGE OF MESH DENSITY OPTIONS IS AVAILABLE

THE OUTDOOR BLIND INFILL OR SKIN:

Mesh Outdoor Blinds

By far the majority of Outdoor Blinds in residential installations choose Mesh skins.

- There is an ever increasing range of superb fiberglass based skin options available.
- Choose from a wide range of colours. Warranties differ between manufacturers – enquire when ordering.
- Choose from a wide range of mesh density options providing up to 99% UV block and 96% wind block.
- Outdoor Blinds over 3500mm width (depending on wind zone) must have mesh skins.
- Mesh Outdoor Blinds can span up to and in some cases over 6000mm depending on wind zone.
- Only Mesh Outdoor Blinds can be motorised.

OR PVC

PVC Outdoor Blinds

- Louvretec supplied PVC Outdoor Blinds carry a one year workmanship and product warranty – excluding the PVC skins.
- PVC skins provide for maximum views and rain protection, however due to the unstable nature of PVC there is no manufacturers warranty available for the PVC skin itself.
- PVC Blinds cannot be motorised.
- PVC Blinds can span up to a maximum of 3500mm depending on wind zone.
- PVC Blinds can react adversely to both heat and cold. Please discuss further with your Louvretec Dealer.



CLEAR PVC BLIND

KEY OPTIONS & FEATURES AT A GLANCE

Moveable Walls:

- Outdoor Blinds are a perfect fit with a Louvretec Room.
- With an Opening or fully Retractable Roof overhead, vertically retractable walls further enhance the total indoor/outdoor experience.

Weather Protection when you need it:

- Sealed Mesh & Clear PVC outdoor blinds can be customised to provide the level of weather protection you require.
- Protect your space from wind, rain, glare and cold weather

Environmentally Friendly:

- Protection from heat and UV in summer
- Helping to close in and capture warmth in winter – enjoy outdoor living all year round.

Easy to Operate:

- Mesh blinds only can be motorized, as well as hand operable – simple individual or group control at the touch of a button.
- Clear PVC blinds are only offered as hand operable
- Hand operated push up / pull down is made easy with the use of an internally mounted spring balanced assist system.
- Lightweight and simple to use, the blind will stay firm in the designated position without rattling in the wind.





KEY OPTIONS & FEATURES AT A GLANCE

Recommended Maximum Spans:

- The inclusion of extra heavy-duty bottom rails has enhanced achievable spans.
- Mesh blinds up to 3500mm high can span up to, and in some cases over 5800mm depending on wind zones.
- Clear PVC blinds up to 3500mm high are recommended to span no more than 3500mm.
- Openings exceeding the above require either a fixed or removable mid-post.

Pelmets for Louvretec Blinds:

- Unless stated otherwise by your Louvretec Dealer full aluminium pelmets are standard for all Mesh blinds.
- A half pelmet only, protecting the outside of the roll is recommended for Clear PVC blinds.

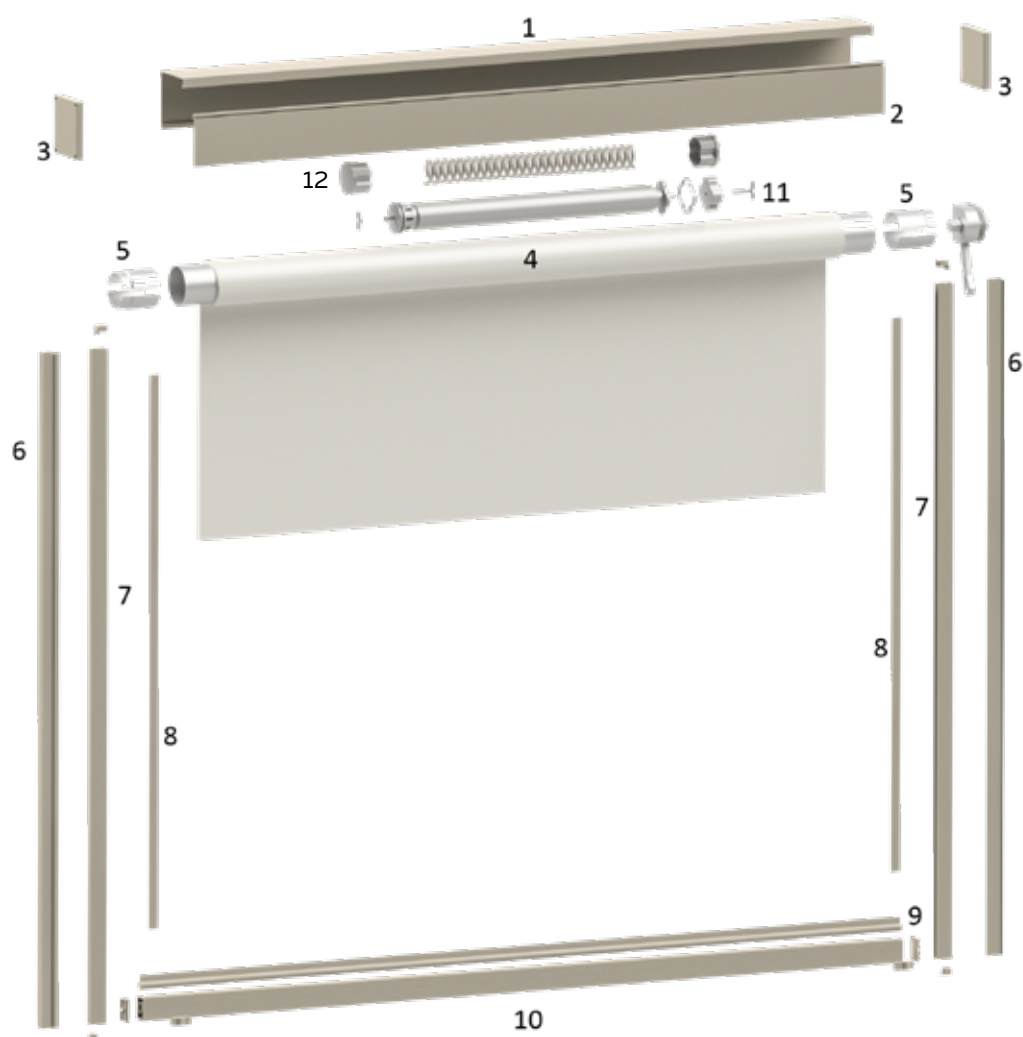
Colour Options:

- A full range of powder coat colours ensure the perfect match for stand-alone or Louvretec Room installations

Sunscreen Mesh:

- Is available in a wide range of colours and transparencies
- Up to 99% UV block
- Up to 96% wind block
- Allows airflow and reduces sun glare
- Easy to maintain, extremely durable and provides high degree of privacy during the day





Index

1. Rear headbox
2. Front headbox (Mesh blinds only - cannot be used on PVC Blinds)
3. End caps
4. Axle tube
5. Axle tube reducer
6. Outer side channel
7. Zip inner rail
8. Zip on blind skin
9. Bottom spline
10. Bottom rail
11. Motor option
12. Spring assist

Outdoor Blinds Size guidelines

MESH

Width up to 5800mm

Height up to 3500mm

PVC

Width up to 3500mm

Height up to 3000mm

HEADBOX

Sizes vary from 110m to 130m square

Typical Outdoor Blind showing motor, crank, or hand operable (spring assist) option

LOUVRETEC PRODUCT WARRANTY

OUTDOOR BLINDS

The Louvretec range of products:

All Louvretec branded products are designed and engineered in Australia & New Zealand by Louvretec to comply with relevant AS/NZS standards - refer to full Louvretec Engineering data Design Manual 2025 Section 13.

Louvretec has the most extensive range of outdoor sun shading/ outdoor living products available in Australasia, backed by a comprehensive network of Louvretec Dealers.



Most Louvretec products sold in Australia are made in Australia*



Most Louvretec products sold in New Zealand are made in New Zealand*

*Some specialised products may only be made in Australia or in NZ and are shipped between each country.

The Authorised Louvretec Dealer Network:

Your Louvretec product will have been supplied and installed by your local Authorised Louvretec Dealer. All Louvretec Dealerships are privately owned, and the same Louvretec Dealer who supplied your Louvretec will also service your Louvretec.

Your Louvretec product has been "Engineered for Life" and we are committed to ensuring that happens.

LouvreCare:

Preventative maintenance and valet. Regular scheduled servicing by a LouvreCare team has real benefits. LouvreCare can vary between Dealerships - consult your local Louvretec Dealer.



Engineered for Life

LouvreTec®
OPENING & RETRACT ROOFS / SUN LOUVRES / SHUTTERS

OUTDOOR BLINDS



All outdoor blinds installed by Louvretec , or an Authorised Louvretec Installer, is from date of invoice, fully warranted for the first year. Mesh blind skins are also covered by a five year manufacturer's warranty. Due to the unstable nature of PVC, there is no manufacturer's warranty available on the PVC skin itself. This warranty covers workmanship, and all componentry, motors, switches and electronics with all labour costs included. In addition, from year two to end of year five, a warranty replacement of parts only applies for all motors, switches and electronics. Labour costs excluded. (Excludes any wiring and electrical connections done by others).

Louvretec exclusively uses Somfy motors. Somfy offers a 5 year warranty on all motors and electronics. Please contact your Louvretec Dealer or Somfy for a complete list of all terms and conditions.



All aluminium and extrusions used in Louvretec's systems are manufactured in an ISO9002 quality assured environment to AS1866 & AS3902 standards. Marine grade T316 stainless steel is used for drive axles, with stainless steel componentry fixings being standard. Plastic injected moulded componentry is all UV stabilised.

A wide range of exterior powder coat finishes are available. Duralloy or equivalent is the standard finish supplied unless stated otherwise and provides excellent resistance to weather and salt spray. This carries warranties of a maintainable service life of 25 years, film integrity of 10 years and colour integrity of 7 years.

The current specifications re anodised aluminium range from 12-20-25 microns depth. The greater the microns the better the protection. With regular cleaning anodised material will retain its original integrity for no less than 10 years.

Our systems are designed to conform to New Zealand and Australian standards wind loadings. Full engineering details available on request.

All blinds require regular cleaning and use to prolong their performance and to help prevent scratching and mould. A warm soapy water washdown is recommended using a car wash detergent. For the Louvretec Ziptrak system, the side guide channels and fabric in the side guide channel should be sprayed with a food grade silicone spray like CRC 808 every 3 months. To apply the lubricant, lower your blind all the way down and apply the silicone spray in the groove between the spline tape and the track, one on each side of the skin. Vuplex or Plexus sprays can be used to rejuvenate your clear PVC screen and reduce the accumulation of dust and other dirt.

LouvreCare is a planned preventative maintenance and valet service designed to keep your Louvretec product clean and in good working order. Contact your Louvretec Dealer for full details.



Warranty effective from _____/_____/_____

Louvretec Representative _____ Print name _____

Site Address _____

Head office: 23c Douglas Alexander Parade, Albany 0632, Auckland New Zealand

www.louvretec.com

LOUVRETEC PRODUCT WARRANTY

OUTDOOR BLINDS



GENERAL INFORMATION AND MAINTENANCE

Louvretec Outdoor Blinds come with a wide range of options. These options determine both the aesthetics and functionality of the blinds. Please take a moment to familiarise yourself with the following:

options

There are two Outdoor Blind options, both with differing features and benefits: Mesh Blinds – for privacy & airflow. These Blinds are typically a composition pvc/polyester mesh, available in a range of colours with varying degrees of openness. PVC Blinds – for weather protection. PVC Blinds can be clear or tinted. Coloured PVC provides full privacy.

operating systems

Hand operated – Blinds are pulled down or pushed up by a spring assisted axle.
Manual Gearbox – Blinds are operated by a gearbox and crank handle.
Motorised – Blinds are operated by a Somfy Tubular motor fitted within the axle, with hand held remote controls as standard. Note – it is not recommended to motorise PVC blinds.

design choices & additional warranty info

- There is a wide range of Mesh fabrics and colours available
- PVC is available clear or tinted.
- Mesh fabrics vary with the percentage of openness and are best selected according to desired levels of privacy and wind protection.
- A full range of powdercoat colours are available for frame and headbox.
- Headboxes or pelmets are additional with Mesh blinds. They are not supplied with PVC blinds due to the potential, when retracted on hot days, to bunch and wrinkle around the axle.
- All Louvretec Outdoor Blinds carry a 1 year workmanship and installation warranty.
- Mesh blinds skins are also covered by a five year manufacturer's warranty.
- Due to the unstable nature of PVC there is no manufacturer's warranty available for the PVC skin itself.

general information

LOUVRETEC OUTDOOR BLINDS ARE COVERED BY A ONE YEAR WORKMANSHIP + INSTALLATION WARRANTY.

SPARE PARTS AND REPAIRS ARE AVAILABLE FROM YOUR LOUVRETEC DEALERSHIP.

ONLY LOUVRETEC APPROVED PARTS ARE TO BE USED.

- In windy conditions, (winds greater than 30km/h) your Outdoor Blinds should be fully retracted all the way up. Moving blinds in windy conditions can be difficult. Wait for a break in the wind, then move your blinds, pushing on the skin with your hand against the wind – in order to free it between the tracks.
- If you're going away, retract the blind up to the top position (fully retracted) to keep it safe in the event of bad weather.
- All blinds require regular cleaning and use to prolong their performance and to help prevent scratching and mould. Use warm soapy water & wash down using household grade mild detergent.
- For the Louvretec Ziptrack system, the fabric and side guide channels should be sprayed with a food grade silicone spray like CRC 808 every 3 months. To apply the lubricant, lower your blind all the way down, and apply the silicone spray in the groove between the spline tape and the track, on each side of the skin.
- For our Ziptrack system, manual hand operated blinds should be operated from the CENTRE of the bottom rail, for even rolling of the blind's skin on the top tube. Motorised blinds should be supervised while in motion.
- Sagging as a result of the blinds own weight will occur. This is not a fault in the system and is unavoidable.
- Once a week fully extend your blind to even out the fabric and let it breathe. Leave it down all day to let it retain its shape.

LOUVRETEC NZ LTD

T +64 9 415 4949

Head office: 23c Douglas Alexander Parade, Albany 0632, Auckland New Zealand

E info@louvretec.co.nz

www.louvretec.com

LOUVRETEC PRODUCT WARRANTY

OUTDOOR BLINDS



summary of standard maintenance required by owner

- Visually check the state of the fabric at least twice a year – in the spring before summer use and in the autumn before winter.
- Make sure the fabric is clean and that there is no mould caused by dust or other materials before the summer.
- Lubricate the moving parts with silicone lubricant every 3-6 months.
- Clean the fabric, if required, using a damp sponge or cloth soaked in warm water and mild car wash detergent. Allow fabric to dry before retracting.
- DO NOT use solvents, ammonia or hydrocarbons.
- DO NOT use alkaline products on PVC fabrics as they cause opaqueness and decrease transparency.

PVC Blinds

- PVC will expand and shrink depending on ambient temperatures. When warm, the PVC is soft and pliable. When cold the blind will tighten up and the PVC will be less pliable. This may affect the ease of movement of the screen.
- In hot weather, leave your blind down at night and operate it during the day to stop it burning on the tube.
- The PVC stiffness in cold weather is not a problem with a manually operated blind, but in a motorised blind, the weighted bottom rail cannot always overcome the PVC stiffness.
- Avoid rolling up your blind when it is wet. This will result in the clear PVC blind having a milky appearance (this should dissipate naturally when the screen is rolled down in warmer conditions and with sun-light), and accelerate the growth of mould or mildew on PVC blinds.
- VuPlex or Plexus Sprays can be used to rejuvenate your clear PVC screen and reduce the accumulation of dust and other dirt.
- Crumpling or wrinkling will occur with PVC blinds, this is very normal due to it's volatile nature.

Mesh Blinds



- Mesh/Fabric materials as with other fabrics can occasionally have small knots, spots of colour, short cord breaks, irregular runs of thread or minor differences in the surface of uniformity or colour and are unavoidable.
- Lighter coloured fabrics will allow more light to pass through than darker coloured fabrics. This is a result of light being absorbed by the darker coloured fabrics.
- Fabric with a stripe or pattern may experience crumpling along the bands of colour. If there is a stripe or pattern on your fabric like the example below, specify to Louvretec how you want the pattern to run (vertical or horizontal) as there is an aesthetic consideration to this.
- Given the high level of pollutants in our atmosphere which lead to acid rain, if the blind is installed near to road, air ducts, forest trees with risk of dripping resin and leaves, and even though they are treated with anti-mould, if they are not frequently cleaned the fabrics can be attacked by micro organisms which make it impossible to clean after.
- Cobweb effect can form when the fabric is being made up, especially in light colours these creases become darker marks, however they do not affect the quality of the blind.
- Waves can form near to the sewing and side edges due to the double thickness of the fabric.
- If the blind is exposed to continuous strong winds, it may show signs of wear, fraying and abrasion.

The above are not product defects and are not covered by the warranty.

LOUVRETEC NZ LTD

T +64 9 415 4949

Head office: 23c Douglas Alexander Parade, Albany 0632, Auckland New Zealand

E info@louvretect.co.nz

www.louvretect.com

