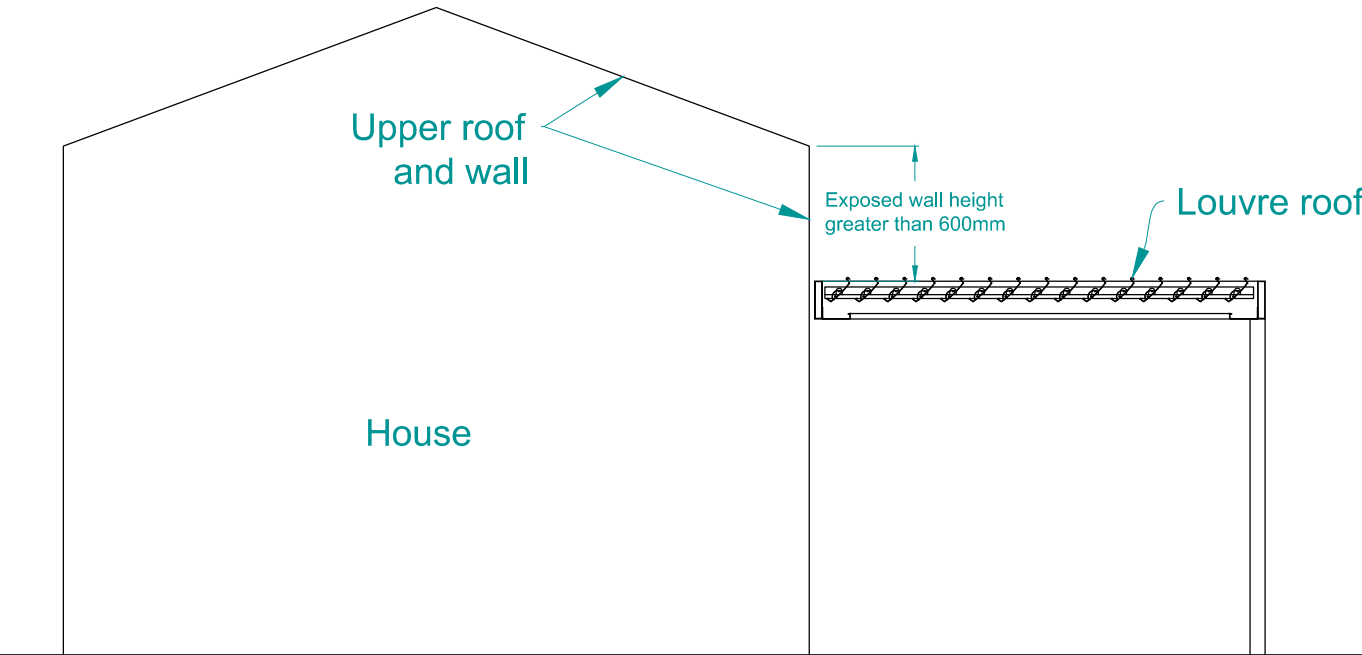




SNOW LOADINGS. AS REQUIRED BY NZS3604:2011 (SECTION 15)

Where a louvre roof forms part of a lower roof meeting an upper wall and the exposed height of the upper wall is greater than 0.6mm, the roof is defined as an abutting roof (similar to NZS3604:2011 15.3). In this situation, the louvre spans and beam spans determined from the Louvretec Tables shall be multiplied by 0.8.

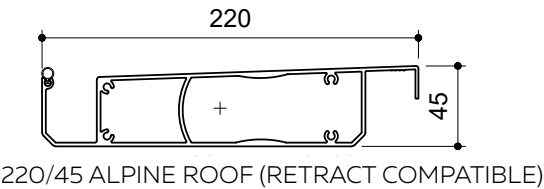
FIGURE 9



STANDARDS NZ 1.5 AND 2.5 kPa SNOW LOADING ZONES NZS 3604:2011

For information about snow zones in New Zealand please see Figure 15.1 from NZS 3604:2011 Timber Framed Buildings. Wind speeds and snow loads must always be considered together. The lesser span taking precedence.

OPENING OR RETRACT ROOF BLADE FOR ALPINE CONDITIONS



SNOW LOAD	LOUVRE ROOF SPANS (mm)	
	1kPa	5000
	1.5kPa	5000
	2kPa	5000
	3kPa	4200
	3.3kPa	4000

