

## DRIVE SYSTEM: SPIRAL PIVOT

### Motorised and Hand Operable Sun Louvre Panels

The Spiral Pivot operating system is as well suited for motorising Sun Louvre panels as it is for motorising Opening Roofs.



HAND ADJUSTABLE, OVERHEAD SUN LOUVRES  
FITTING WITHIN AN OPENING



MOTORISED, VERTICAL SUN LOUVRES  
FITTING WITHIN AN OPENING

### The Spiral Pivot System



Louvretec's award winning Spiral Pivot system operates 17 different styles and shapes of louvres.

Engineered to include:

- Marine grade 12.7mm SS hex drive shaft
- Self-lubricating drive and pivot bearings
- Notched angle double fixed blade retention
- Powered by Somfy motors & controls

Everything is hidden from sight & protected from the weather. There are no unsightly drive arms or external motors on show.

### Reliability

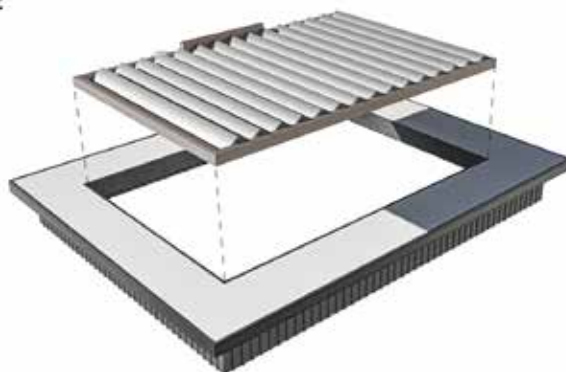
2025 sees over one million individual louvre blades worldwide pivoting with the Louvretec Spiral Drive system. Numbers that speak volumes regarding style, reliability & being totally fit for purpose.



MOTORISED, VERTICAL SUN LOUVRES  
INCLUDING STRUCTURAL FRAME

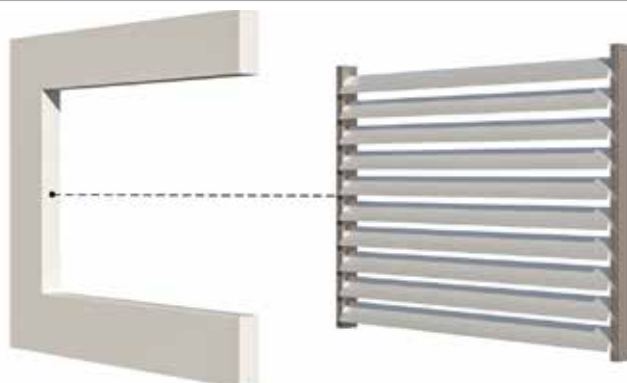
## MOTORISED & HAND OPERABLE SPIRAL PIVOT SUN LOUVRE PANELS

Installation options :



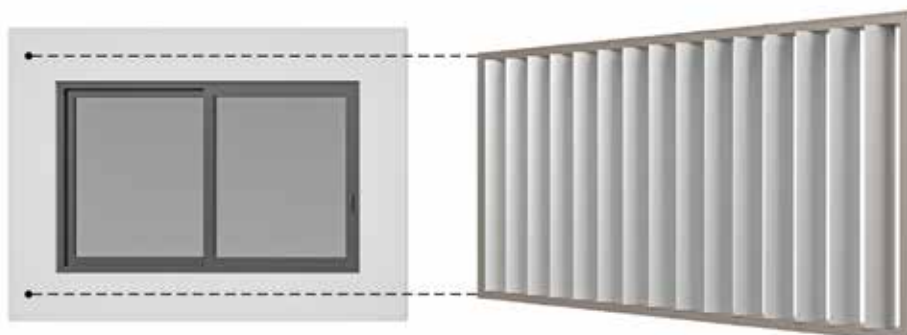
### OVERHEAD FITTING INTO AN EXISTING OPENING

Sun Louvre panel may have Drive and Pivot Frames only or may have Frame to Four Sides. Motor may be located on top in motor cover, or down under.



### VERTICAL FITTING INTO AN EXISTING OPENING

Sun Louvre panel may have Drive and Pivot Frames only or may have Frames to Four Sides. Motor located down under.



### VERTICAL REQUIRING A STRUCTURAL SUB-FRAME

Sun Louvre panel includes Elam-Street Structural Frame to Four Sides. Motor located down under.